

# 裝置、裝修物料及設備

## FITTINGS, FINISHES AND APPLIANCES

### 1.外部裝修物料

細項	描述
(a)外牆	外牆鋪砌花崗石、花崗石外牆瓦及噴漆。
(b)窗	客 / 飯廳及睡房選用顏色氟化炭噴塗鋁質窗框配玻璃。玻璃物料為著色玻璃，離地台飾面1,100毫米以下為強化玻璃。客 / 飯廳及睡房窗台枕手鋪砌雲石。
(c)窗台	無
(d)花槽	花崗石
(e)陽台或露台	花崗石地台。天花為油漆天花。露台為有蓋的。
(f)乾衣設施	没有

### 2.室內裝修物料

細項	描述
(a)大堂	地台及牆身鋪砌花崗石及雲石配冷氣系統。天花為石膏板天花。
(b)內牆及天花板	客/飯廳及睡房的牆身、天花板、石膏板天花及所有外露部份均塗上乳膠漆。(8B, 11A及16A單位除外) 8B及11A單位 – 客/飯廳及睡房的牆身為天然石材、鏡材、布料、不銹鋼、塑膠板面、玻璃、木材、仿皮及牆紙，天花及石膏板天花均塗上乳膠漆。部份石膏板天花設有嵌入式照明裝置。 16A單位 – 客/飯廳及睡房的牆身為鏡材、塑膠板面、牆紙及乳膠漆，天花及石膏板天花均塗上乳膠漆。部份石膏板天花設有嵌入式照明裝置。
(c)內部地板	客/飯廳及睡房的地台鋪砌長條木地板配木腳線。(8B及11A單位除外) 8B單位 – 客/飯廳地台鋪砌天然石材，配木材地腳線。睡房鋪砌木地板。11A單位 – 客/飯廳地台鋪砌天然石材，配不銹鋼及木材地腳線。睡房鋪地毯及天然石材。
(d)浴室	地台鋪砌雲石，牆身設有鏡及鋪砌雲石至假天花，部份石膏板天花塗上乳膠漆。(11A單位浴室3及各單位多用途房內之洗手間除外) 11A單位浴室3 – 地台鋪砌雲石，牆身鋪砌天然石材、鏡及牆紙至假天花，部分石膏板天花塗上乳膠漆。 8B單位多用途房內之洗手間 – 地台鋪砌瓷磚及環保木地板，牆身鋪砌瓷磚，及裝置鋁板天花。 8B單位以外各單位多用途房內之洗手間 – 地台鋪砌瓷磚，牆身鋪砌瓷磚，及裝置鋁板天花。
(e)廚房	地台鋪砌雲石，牆身鋪砌雲石至假天花。 鋁板或石膏板天花塗上乳膠漆，假天花設嵌入式照明裝置。

### 3.室內裝置

細項	描述
(a)門	大門選用實心木門配防盜眼、氣鼓、門擋及門鎖。廚房門選用實心木門配玻璃(11A單位除外)、氣鼓及門擋，11A單位廚房門選用實心木門配以氣鼓。睡房及浴室木門選用實心木門配以門鎖，部份浴室木門附有百葉窗或為趟門。門手柄物料為亮金屬飾面手柄。多用途房門選用實心木門配以門鎖、氣鼓及門擋。多用途房廁所門選用玻璃門。
(b)浴室	裝置煤氣熱水爐。枱面物料為雲石台面。 A單位及B單位：主人房浴室裝有強化纖維嵌入式按摩浴缸 (尺寸：1,800毫米長 × 800毫米寬 × 550毫米高)。主人房浴室配備陶瓷洗手盤、亮鉻色銅製洗手盤水龍頭、亮鉻色銅製浴缸及淋浴間花灑水龍頭、陶瓷座廁連多功能電子廁板、不銹鋼廁紙架、不銹鋼電熱毛巾架、排氣扇以及主人房浴室電視。 A單位：浴室1裝有搪瓷鑄鐵嵌入式浴缸(尺寸：1,700毫米長 × 750毫米寬 × 470毫米高)。浴室1配備陶瓷洗手盤、亮鉻色銅製洗手盤水龍頭、亮鉻色銅製浴缸花灑水龍頭、陶瓷座廁、不銹鋼毛巾架、不銹鋼廁紙架及排氣扇。 B單位：浴室1裝有搪瓷鑄鐵嵌入式浴缸(尺寸：1,700毫米長 × 750毫米寬 × 470毫米高)。浴室1配備陶瓷洗手盤、亮鉻色銅製洗手盤水龍頭、亮鉻色銅製浴缸花灑水龍頭、陶瓷座廁、不銹鋼毛巾架、不銹鋼廁紙架及排氣扇。

	A單位：浴室2配備陶瓷洗手盤、亮鉻色銅製洗手盤水龍頭、亮鉻色銅製及塑膠淋浴柱、陶瓷座廁、不銹鋼廁紙架及排氣扇。 B單位：浴室2配備陶瓷洗手盤、亮鉻色銅製洗手盤水龍頭、亮鉻色銅製及塑膠淋浴柱、陶瓷座廁、不銹鋼廁紙架及排氣扇。 A單位：浴室3(11A單位除外)配備陶瓷洗手盤、亮鉻色銅製洗手盤水龍頭、亮鉻色銅製及塑膠淋浴柱、陶瓷座廁、不銹鋼廁紙架及排氣扇。 11A單位：浴室3配備玻璃洗手盤、亮鉻色銅製洗手盤水龍頭、陶瓷座廁、不銹鋼廁紙架及排氣扇。 B單位：客廁配備陶瓷洗手盤、亮鉻色銅製洗手盤水龍頭、陶瓷座廁、不銹鋼廁紙架及排氣扇。 多用途房配備陶瓷洗手盤、亮鉻色銅製洗手盤水龍頭、陶瓷座廁及排氣扇。 隨樓附送之裝置及設備，請參考第49-50頁的設備說明。
(c)廚房	雲石地台/雲石牆身鋪砌至天花/鋁板天花/人造石煮食台面。採用隱藏式銅喉。裝置及設備包括：木製廚櫃(地櫃門面板配木皮飾面，高櫃及吊櫃配厚高光亞克力飾面及鋁質邊，地櫃及吊櫃配鋁質拉手，高櫃配鋁質長拉手)、不銹鋼鉗盤、亮鉻色冷熱水龍頭、雪櫃、抽油煙機、焗爐、蒸煮焗爐、暖碟機、洗衣機、乾衣機、洗碗碟機、單頭煤氣爐頭、紅酒櫃、雙頭煤氣爐頭、電烤板及排氣扇。隨樓附送之裝置及設備，請參考第49-50頁的設備說明。(16A單位除外) 16A單位 - 雲石地台/雲石牆身鋪砌至天花/鋁板天花/人造石煮食台面。採用隱藏式銅喉。裝置及設備包括：木製廚櫃(地櫃門面板配木皮飾面，高櫃及吊櫃門面板配厚高光亞克力飾面，地櫃及吊櫃配鋁質拉手，高櫃配鋁質長拉手)、不銹鋼鉗盤、亮鉻色冷熱水龍頭、雪櫃、抽油煙機、焗爐、蒸煮焗爐、暖碟機、洗衣機、乾衣機、洗碗碟機、單頭煤氣爐頭、紅酒櫃、雙頭煤氣爐頭、電烤板及排氣扇。隨樓附送之裝置及設備，請參考第49-50頁的設備說明。
(d)睡房	所有睡房均裝有分體式冷氣機。
(e)電話	客 / 飯廳及睡房裝妥電話插頭。有關接駁點之數目及位置，請參考第51-56頁機電裝置平面圖及住宅單位機電裝置數量說明表。
(f)天線	客 / 飯廳及睡房裝妥本地電台及電視天線插座。有關接駁點之數目及位置，請參考第51-56頁機電裝置平面圖及住宅單位機電裝置數量說明表。
(g)電力裝置	裝置入牆暗線燈位及插座。採用隱藏式導管。有關電插座及冷氣機接駁點之數目及位置，請參考第51-56頁機電裝置平面圖及住宅單位機電裝置數量說明表。
(h)氣體供應	每戶裝妥煤氣喉接駁至煮食爐及煤氣熱水爐。位置請參考第51-55頁的機電裝置平面圖。
(i)洗衣機接駁點	設於多用途房內，接駁點在低位。位置請參考第51-55頁的機電裝置平面圖。
(j)供水	裝妥銅喉提供冷、熱水。採用隱藏式銅喉。

### 4.雜項

細項	描述
(a)升降機	所有住宅樓層均設有兩部客用升降機及一部工人升降機。 升降機型號為TOSHIBA CV-150HS。
(b)信箱	入口大堂設有每戶之信箱。信箱物料為鏡面不銹鋼。
(c)垃圾收集	垃圾及物料回收點設於每層住宅公共地方。垃圾及物料回收站設於地下，由清潔工人定時收集。
(d)水錶、電錶及氣體錶	每層錶房內均設有每戶之獨立水、電錶。單位內設有每戶獨立氣體錶。

### 5.保安設施

描述
設有閉路電視及保安監察系統。每戶均設視像對講機。項目設有智能卡保安系統。

賣方承諾如發展項目中沒有安裝指明的品牌名稱或產品型號的升降機或設備，便會安裝品質相若的升降機或設備。



# 裝置、裝修物料及設備

## FITTINGS, FINISHES AND APPLIANCES

### 1.Exterior finishes

Item	Description
(a) External wall	Granite cladding, granite external tiles and spray paint finishes.
(b) Window	Aluminum window frames with coloured fluorocarbon coating finish and glass in living, dining room and bedrooms. Tinted glass for windows, tempered glass below 1,100mm from finished floor level. Window sills finished with marble at living / dining room and all bedrooms.
(c) Bay window	N/A
(d) Planter	Granite
(e) Verandah or balcony	Granite floor, painted ceiling. Balcony is covered.
(f) Drying facilities for clothing	Nil.

### 2.Interior finishes

Item	Description
(a) Lobby	Floor finished with granite and marble; walls finished with granite and marble; air-conditioned; gypsum board ceiling.
(b) Internal wall and ceiling	Internal wall, ceiling, gypsum board ceiling and all exposed surface of living/ dining rooms and bedrooms finished with emulsion paint. (except units 8B, 11A and 16A) Units 8B and 11A – Internal wall of living/ dining rooms and bedrooms finished with natural stone, mirror, cloth, stainless steel, plastic laminate, glass, wood veneer, artificial leather and wall paper; ceiling and gypsum board ceiling finished with emulsion paint. Part of gypsum board ceiling mounted with concealed light fittings. Unit 16A – Internal wall of living/ dining room and bedrooms finished with mirror, plastic laminate, wallpaper and emulsion paint; ceiling and gypsum board ceiling finished with emulsion paint. Part of gypsum board ceiling mounted with concealed light fittings.
(c) Internal floor	Floor of living/ dining rooms and bedrooms finished with strip timber flooring and timber skirting. (except units 8B and 11A) Unit 8B – Floor of living/ dining rooms finished with natural stone and timber skirting. Floor of bedrooms finished with timber flooring. Unit 11A – Floor of living/ dining rooms finished with natural stone and stainless steel and timber skirting. Floor of bedrooms finished with carpet and natural stone.
(d) Bathroom	Floor finished with marble, wall finished with mirror on wall and marble up to false ceiling, gypsum board ceiling with emulsion paint. (except third bathroom of unit 11A and toilet inside utility room of all units) Third bathroom of unit 11A – Floor finished with marble; wall finished with natural stone, mirror and wall paper up to false ceiling, gypsum board ceiling with emulsion paint. Toilet inside utility room of unit 8B – Floor finished with ceramic tile and recycled timber flooring; wall finished with ceramic tile; and ceiling installed with aluminium panels. Toilet inside utility room of all units other than unit 8B – Floor finished with ceramic tile; wall finished with ceramic tile; ceiling installed with aluminium panels.
(e) Kitchen	Floor finished with marble, wall finished with marble up to false ceiling. Aluminum ceiling or gypsum board ceiling finished with emulsion paint, false ceiling mounted with concealed light fittings.

### 3.Interior fittings

Item	Description
(a) Doors	Entrances – Solid-core timber veneered door, fitted with lockset, eye viewer, door closer and door stopper. Kitchens – Solid-core timber veneered door, fitted with glass panel (except unit 11A), door closer and door stopper. Kitchen of Unit 11A – Solid-core veneered door with door closer. Bedrooms and Bathrooms – Solid-core veneered door with lockset, some bathroom doors with louvers. Some bathroom doors are sliding door. Bright metallic finished handle is provided. Utility Rooms – Solid-core veneered door with lockset, door closer and door stopper. Lavatory in Utility Rooms – Glass sliding door.
(b) Bathroom	Town gas water heater is provided. Countertop is fitted with marble. High gloss acrylic and built-in bathtub (size: 1,800mmL × 800mmW × 550mmH) with whirlpool function is provided in master bathroom of unit A and unit B. Vitreous china basin, chrome colour brass made basin mixer, chrome colour brass made bath and shower mixer, vitreous china water closet with multi-functional washlet, stainless steel paper holder, stainless steel heated towel rack, exhaust fan and master bathroom TV are provided in master bathroom of unit A and unit B. Enameled cast iron and built-in bathtub (size: 1,700mmL × 750mmW × 470mmH) is provided in the first bathroom of unit A. Vitreous china basin, chrome colour brass made basin mixer, chrome colour brass made bath and shower mixer, vitreous china water closet, stainless steel towel rack, stainless steel paper holder and exhaust fan are provided in the first bathroom of unit A. Enameled cast iron and built-in bathtub (size: 1,700mmL × 750mmW × 470mmH) is provided in the first bathroom of unit B. Vitreous china basin, chrome colour brass made basin mixer, chrome colour brass made bath and shower mixer, vitreous china water closet, stainless steel towel rack, stainless steel paper holder and exhaust fan are provided in the first bathroom of unit B. Vitreous china basin, chrome colour brass made basin mixer, chrome colour brass made and plastic shower column, vitreous china water closet, stainless steel paper holder and exhaust fan are provided in the second bathroom of unit A.

	Vitreous china basin, chrome colour brass made basin mixer, chrome colour brass made and plastic shower column, vitreous china water closet, stainless steel paper holder and exhaust fan are provided in the second bathroom of unit B. Vitreous china basin, chrome colour brass made basin mixer, chrome colour brass made and plastic shower column, vitreous china water closet, stainless steel paper holder and exhaust fan are provided in the third bathroom of unit A. (except unit 11A) Glass basin, chrome colour brass made basin mixer, vitreous china water closet, stainless steel paper holder and exhaust fan are provided in the third bathroom of unit 11A. Vitreous china basin, chrome colour brass made basin mixer, vitreous china water closet, stainless steel paper holder and exhaust fan are provided in the guest toilet of unit B. Vitreous china basin, chrome colour brass made basin mixer, vitreous china water closet and exhaust fan are provided in utility room. For fittings and equipment, please refer to Appliances Schedule on page 49-50.
(c) Kitchen	Floor marble/ Wall marble up to ceiling/ Aluminum ceiling/ artificial granite cooking bench. Concealed copper pipes are provided. Fittings and equipment include Wooden Cabinets (base cabinet doors finished with wood veneer, tall and wall-mounted cabinet doors finished with high glossy acrylic thick panel with aluminum edge, base and wall-mounted cabinets with aluminum spacer profile handles, tall cabinet with aluminum strip bar handles), stainless steel sink, chrome color mixer, refrigerator, exhaust hood, oven, steamer-oven, plate warmer, washer, dryer, dish washer, gas hob, wine cellar, double burner, BBQ grill and exhaust fan. For fittings and equipment, please refer to Appliances Schedule on page 49-50. (except unit 16A) Unit 16A - Floor marble/ Wall marble up to ceiling/ Aluminum ceiling/ artificial granite cooking bench. Concealed copper pipes are provided. Fittings and equipment include Wooden Cabinets (base cabinet doors finished with wood veneer, tall and wall-mounted cabinet doors finished with high glossy acrylic thick panel, base and wall-mounted cabinets with aluminum spacer profile handles, tall cabinet with aluminum strip bar handles), stainless steel sink, chrome color mixer, refrigerator, exhaust hood, oven, steamer-oven, plate warmer, washer, dryer, dish washer, gas hob, wine cellar, double burner, BBQ grill and exhaust fan. For fittings and equipment, please refer to Appliances Schedule on page 49-50.
(d) Bedroom	Split-type air conditioners are installed in all bedrooms.
(e) Telephone	Telephone point is installed at living/ dining rooms and all bedrooms. For the number and the location of connection points, please refer to the Mechanical & Electrical Provision Plans and the Schedule of Mechanical & Electrical Provisions of Residential Units on page 51-56.
(f) Aerials	Communal TV/FM points are installed at living/ dining rooms and all bedrooms. For the number and the location of connection points, please refer to the Mechanical & Electrical Provision Plans and the Schedule of Mechanical & Electrical Provisions of Residential Units on page 51-56.
(g) Electrical installations	Concealed conduit wiring for lighting and power point. Concealed conduits are provided. For the number and the location of power points and air-conditioner points, please refer to the Mechanical & Electrical Provision Plans and the Schedule of Mechanical & Electrical Provisions of Residential Units on page 51-56.
(h) Gas supply	Gas supply pipes provided and connected to cooker hob and gas water heaters. For the locations, please refer to the Mechanical & Electrical Provision Plans on page 51-55.
(i) Washing machine connection point	Inside utility room, connection point at low level. For the locations, please refer to the Mechanical & Electrical Provision Plans on page 51-55.
(j) Water supply	Copper pipes for hot and cold water. Concealed copper pipes are provided.

### 4.Miscellaneous

Item	Description
(a) Lifts	All domestic floors are served by two numbers of passenger lifts and one number of servant lifts. Lift model is TOSHIBA CV-150HS.
(b) Letter box	Letter box for each unit is provided at the main entrance lobby. Letter box material is mirror finished stainless steel.
(c) Refuse collection	Refuse Storage and Material Recovery Point is provided in the common area of each residential floor. Refuse Storage and Material Recovery Chamber is provided on lobby floor for collection of refuse by cleaners.
(d) Water meter, electricity meter and gas meter	Separate meters for water supply and electricity in meter rooms on each floor. Separate meter for gas in the unit.

### 5.Security facilities

Description
CCTV system and surveillance system are provided. Video door unit is provided for every residential unit. Smart card access system is provided in the development.

The Vendor undertakes that if lifts or appliances of specified brand name or model number are not installed in the Development, lifts or appliances of comparable quality will be installed.

# 裝置、裝修物料及設備

## FITTINGS, FINISHES AND APPLIANCES

### 6.設備 Appliances

	Flat A at 2/F, 3/F, 6/F, 9/F, 15/F, 16/F 2A, 3A, 6A, 9A, 15A, 16A單位		Flat A at 5/F, 8/F 5A, 8A單位		Flat A at 7/F, 10/F, 11/F, 12/F 7A, 10A, 11A, 12A單位		Flat B at 2/F to 9/F, 12/F to 16/F 2B至9B, 12B至16B單位		Flat B at 10/F 10B單位		Flat B at 11/F 11B單位	
Living Room / Dining Room 客廳 / 飯廳	Brand 牌子	Model No. 型號	Brand 牌子	Model No. 型號	Brand 牌子	Model No. 型號	Brand 牌子	Model No. 型號	Brand 牌子	Model No. 型號	Brand 牌子	Model No. 型號
Split Type Air-conditioner - Indoor Unit 分體式冷氣機 – 室內機	-	-	-	-	General	ASG18UFAJR	General	ASG18UFAJR / ASHA12L / ASG9UFADR	-	-	-	-
Split Type Air-conditioner - Outdoor Unit 分體式冷氣機 – 室外機	-	-	-	-	General	AOG54UJBMR	General	AOG54UJBMR / AOWR12L / AOG54UJBMR	-	-	-	-
VRV System - Indoor Unit 中央冷氣系統 – 室內機	Daikin	FXAQ50PVE	Daikin	FXAQ50AVM	-	-	-	-	Daikin	FXAQ50AVM	Daikin	FXAQ50AVM
VRV System - Outdoor Unit 中央冷氣系統 – 室外機	Daikin	RJLQ6AAV	Daikin	RJLQ6AAV	-	-	-	-	Daikin	RJLQ6BAV	Daikin	RJLQ6AAV
Video Door Unit 視像對講機	TCS	TCS-1UD50	TCS	TCS-1UD50	TCS	TCS-1UD50	TCS	TCS-1UD50	TCS	TCS-1UD50	TCS	TCS-1UD50

	Flat A at 2/F, 6/F, 9/F, 15/F, 16/F 2A, 6A, 9A, 15A, 16A單位		Flat A at 3/F 3A單位		Flat A at 5/F, 8/F 5A, 8A單位		Flat A at 7/F, 10/F, 11/F, 12/F 7A, 10A, 11A, 12A單位		Flat B at 2/F to 9/F, 12/F to 16/F 2B至9B, 12B至16B單位		Flat B at 10/F 10B單位		Flat B at 11/F 11B單位	
Bedroom 睡房	Brand 牌子	Model No. 型號	Brand 牌子	Model No. 型號	Brand 牌子	Model No. 型號	Brand 牌子	Model No. 型號	Brand 牌子	Model No. 型號	Brand 牌子	Model No. 型號	Brand 牌子	Model No. 型號
Split Type Air-conditioner - Indoor Unit 分體式冷氣機 – 室內機	General	ASWA12L	-	-	Daikin	FTXA35AV1H	General	ASG12UFADR/ ASWA12L	General	ASG12UFADR/ ASWA12L	Daikin	FTXA35AV1H	Daikin	FTXA35AV1H
Split Type Air-conditioner - Outdoor Unit 分體式冷氣機 – 室外機	General	AOWR12L	-	-	Daikin	RXA35AV1H	General	AOG54UJBMR/ AOWR12L	General	AOG54UJBMR/ AOWR12L	Daikin	RXA35AV1H	Daikin	RXA35AV1H
VRV System - Indoor Unit 中央冷氣系統 – 室內機	Daikin	FXAQ25PVE / FXAQ32PVE	Daikin	FXAQ32PVE	Daikin	FXAQ25AVM / FXAQ32AVM	-	-	-	-	Daikin	FXAQ25AVM / FXAQ32AVM	Daikin	FXAQ25AVM / FXAQ32AVM
VRV System - Outdoor Unit 中央冷氣系統 – 室外機	Daikin	RJLQ6AAV	Daikin	RJLQ6AAV	Daikin	RJLQ6AAV	-	-	-	-	Daikin	RJLQ6BAV	Daikin	RJLQ6AAV

			Flat A A單位		Flat B B單位	
Bathroom / Guest Toilet 浴室 / 客廁			Brand 牌子	Model No. 型號	Brand 牌子	Model No. 型號
Master Bathroom TV 主人房浴室電視		Master Bathroom 主人房浴室	JSA	B1502	JSA	B1502
Master Bathroom Heated Towel Rack 主人房浴室電熱毛巾架		Master Bathroom 主人房浴室	Radiance / Hotwire	CR7R	Radiance / Hotwire	CR7R
Master Bathroom Multi-functional Washlet 主人房浴室多功能電子廁板		Master Bathroom 主人房浴室	TOTO	TCF9683AJ	TOTO	TCF9683AJ
Master Bathroom Exhaust Fan 主人房浴室排氣扇		Master Bathroom 主人房浴室	Panasonic	FV-18NF2H	Panasonic	FV-18NF2H
All Bathrooms (Except for Master Bathroom) Exhaust Fan 所有浴室(除主人房浴室外)排氣扇		Bathrooms (Except for Master Bathroom) 浴室(除主人房浴室外)	Panasonic	FV-18NS2H	Panasonic	FV-18NS2H
Guest Toilet Exhaust Fan 客廁排氣扇		Guest Toilet 客廁	-	-	Panasonic	FV-20NS2H

賣方承諾如發展項目中沒有安裝指明的品牌名稱或產品型號的升降機或設備，便會安裝品質相若的升降機或設備。  
The Vendor undertakes that if lifts or appliances of specified brand name or model number are not installed in the Development, lifts or appliances of comparable quality will be installed.

# 裝置、裝修物料及設備

## FITTINGS, FINISHES AND APPLIANCES

	Flat A A單位		Flat B B單位	
Kitchen 廚房	Brand 牌子	Model No. 型號	Brand 牌子	Model No. 型號
Refrigerator 雪櫃	Sub-Zero	ICBBI-48S/S	Sub-Zero	ICBBI-48S/S
Exhaust Hood 抽油煙機	Gaggenau	AI400-120	Gaggenau	AW400-120
Oven 焗爐	Gaggenau	BO271-101	Gaggenau	BO271-101
Steamer-oven 蒸煮焗爐	Gaggenau	BS271-100	Gaggenau	BS271-100
Plate Warmer 暖碟機	Gaggenau	WS-222-100	Gaggenau	WS-222-100
Dish Washer 洗碗碟機	Gaggenau	DI460-111	Gaggenau	DI460-111
Gas Hob 單頭煤氣爐頭	Gaggenau	VG231-311SG	Gaggenau	VG231-311SG
Wine Cellar 紅酒櫃	Gaggenau	RW404-260	Gaggenau	RW404-260
Double Burner 雙頭煤氣爐頭	Gaggenau	VG232-322SG	Gaggenau	VG232-322SG
BBQ Grill 電烤板	Gaggenau	VR230-112	Gaggenau	VR230-112
Exhaust Fan 排氣扇	Panasonic	FV-25NS2H	Panasonic	FV-25NS2H

	Flat A A單位		Flat B B單位	
Utility Room 多用途房	Brand 牌子	Model No. 型號	Brand 牌子	Model No. 型號
Exhaust Fan 排氣扇	Panasonic	FV-20NS2H	KDK	17CUF
Washer 洗衣機	Miele	W3844	Miele	W3844
Dryer 乾衣機	Miele	T4804 C	Miele	T4804 C

賣方承諾如發展項目中沒有安裝指明的品牌名稱或產品型號的升降機或設備，便會安裝品質相若的升降機或設備。  
The Vendor undertakes that if lifts or appliances of specified brand name or model number are not installed in the Development, lifts or appliances of comparable quality will be installed.

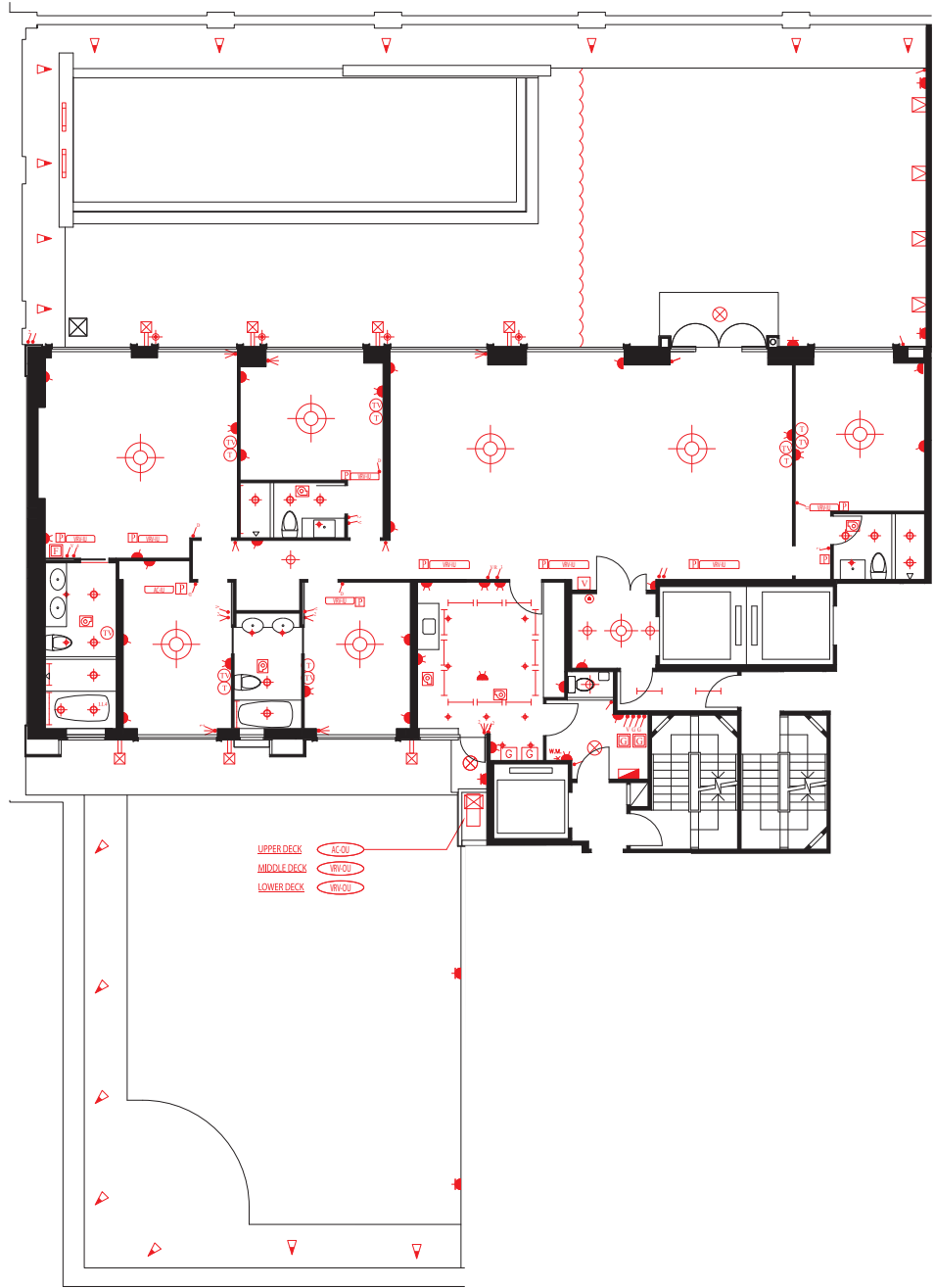


# 裝置、裝修物料及設備

## FITTINGS, FINISHES AND APPLIANCES

### 機電裝置圖 Mechanical & Electrical Provisions Plans

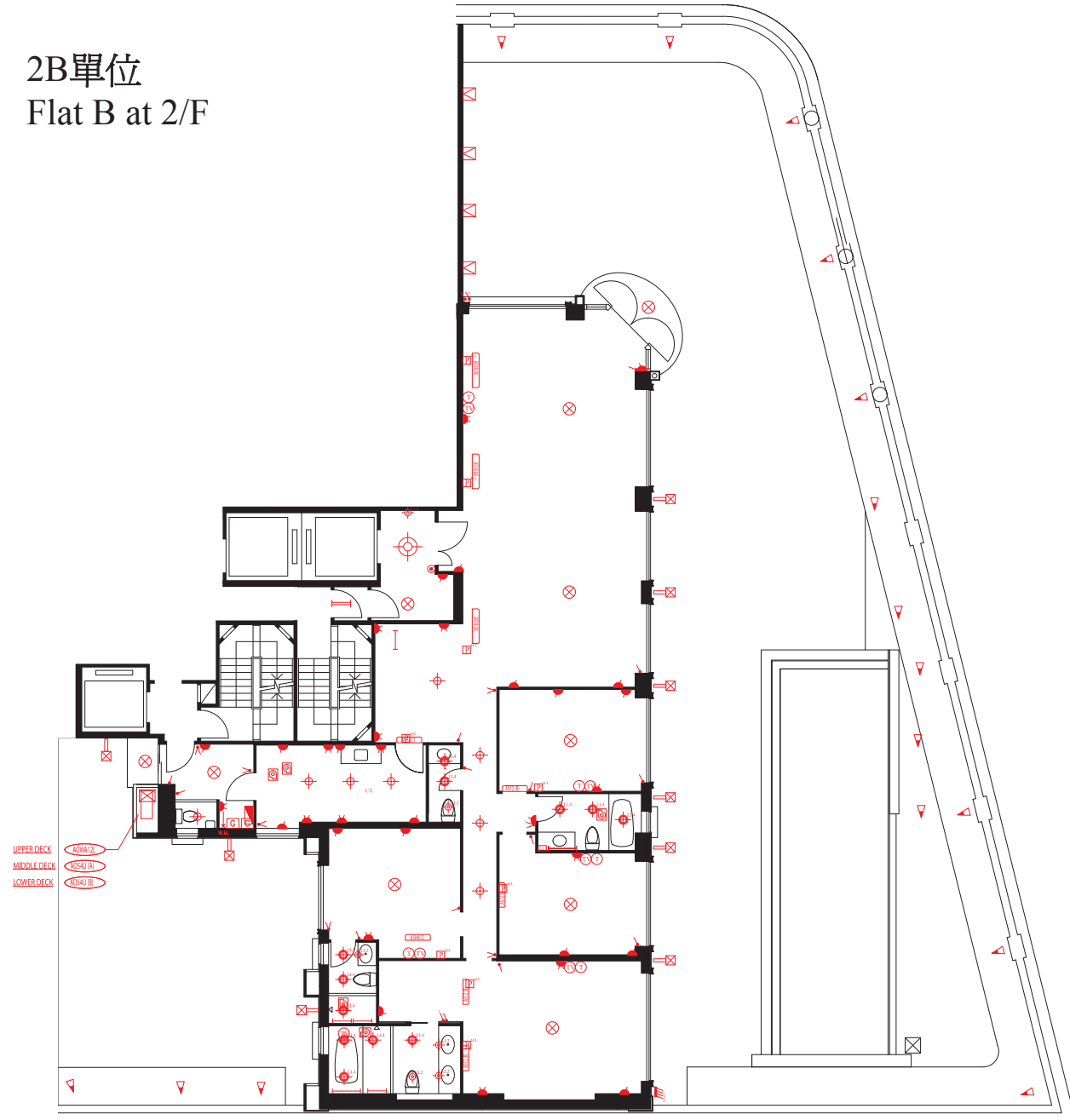
2A單位  
Flat A at 2/F



- ⊗ 天花燈位 LAMP HOLDER C/W INCANDESCENT LAMP
- ⚡/⊕/⊖ 天花筒燈 CEILING DOWNLIGHT
- ⊙ 天花吊燈 PENDANT LIGHT
- 光管 T5 FLUORESCENT TUBE
- ⚡ 光暗開關 DIMMER SWITCH
- ⚡/⚡/⚡ 10A開關 10A SWITCH
- ⚡/⚡ 二路照明開關 10A TWO WAY LIGHTING SWITCH
- ⚡/⚡/⚡ 三路照明開關 10A THREE WAY LIGHTING SWITCH
- ⚡ 排氣扇開關 VENTILATION FAN ON/OFF SWITCH
- ⚡ 排氣扇及抽油煙機開關 VENTILATION FAN AND EXHAUST HOOD ON/OFF SWITCH
- ⚡ 煤氣熱水爐開關 GAS WATER HEATER ON/OFF SWITCH

- ⚡ 13A單位插座 13A 3-PIN SHUTTERED SWITCHED SOCKET OUTLET (SINGLE)
- ⚡ 13A雙位插座 13A 3-PIN SHUTTERED SWITCHED SOCKET OUTLET (TWIN)
- ⚡ 13A保險接線組件 13A FUSED CONNECTION UNIT
- ⚡ 防水13A單位插座 WATER PROOF 13A SWITCHED SOCKET OUTLET (SINGLE)
- 防水插座 ISOLATOR C/W WEATHERPROOF ENCLOSURE
- ⚡ 配電箱 MCB BOARD
- ⚡ 15A單位插座 15A 3-PIN SHUTTERED SWITCHED SOCKET OUTLET
- ⚡/⚡ 20A冷氣機開關 20A DP SWITCH C/W PILOT LIGHT
- ⚡ 煤氣熱水爐 GAS WATER HEATER
- ⚡ 煤氣熱水爐控制器 GAS WATER HEATER CONTROLLER
- ⚡ 電地暖控制器 ELECTRIC FLOOR HEATER CONTROLLER

2B單位  
Flat B at 2/F



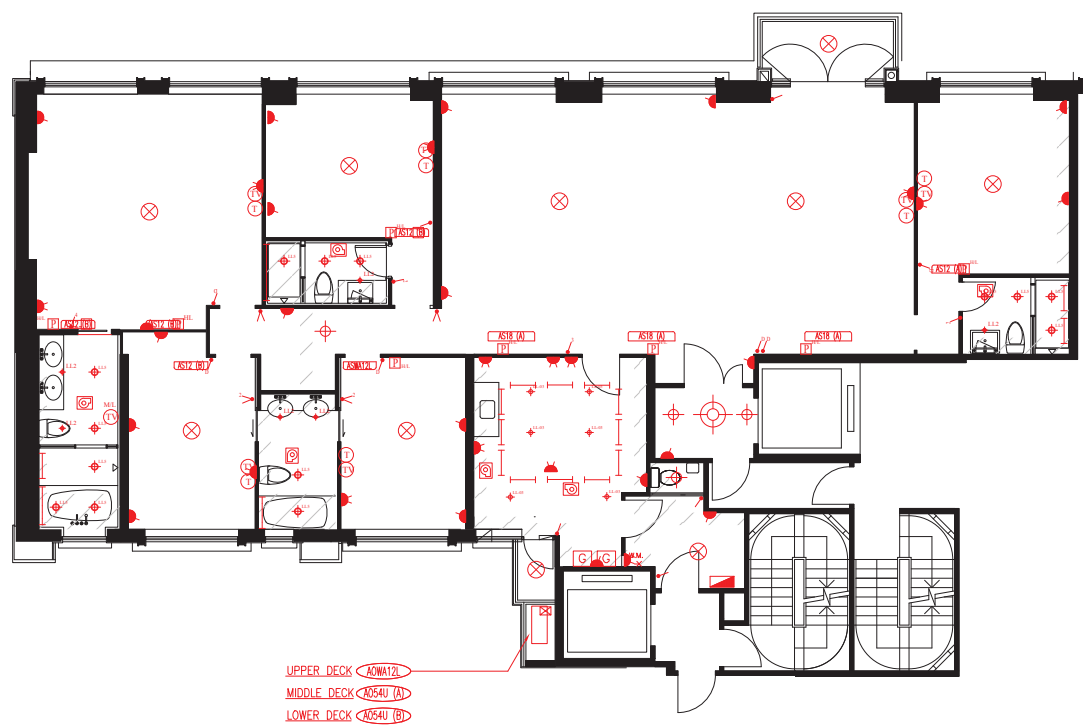
- ⚡ 30A保險接線組件 30A FUSED CONNECTION UNIT
- ⚡ 電話插座 TELEPHONE OUTLET
- ⚡ 電視及公共天線插座 TV&FM OUTLET
- ⚡ 門鈴 DOOR BELL PUSH BUTTON
- ⚡ 視像對講機 VIDEO DOOR PHONE UNIT
- ⚡ 分體式冷氣機室內機 A/C INDOOR UNIT
- ⚡ 分體式冷氣機室外機 A/C OUTDOOR UNIT
- ⚡ 中央冷氣系統室內機 VRV SYSTEM INDOOR UNIT
- ⚡ 中央冷氣系統室外機 VRV SYSTEM OUTDOOR UNIT
- ⚡ 分體式冷氣機室內機 A/C INDOOR UNIT
- ⚡ 分體式冷氣機室外機 A/C OUTDOOR UNIT

- ⚡ 洗衣機接駁位 CONNECTON POINT FOR WASHING MACHINE
- ⚡ LED燈帶 LED STRIP LIGHT
- ⚡ 花槽燈 UPLIGHT
- ⚡ 圓桶燈 DOWN LIGHT
- ⚡ 樓梯燈 STEP RECESSED LIGHT
- ⚡ 牆身壁燈 WALL MOUNT LIGHT
- ⚡ 牆地角燈 WALL RECESSED LIGHT
- ⚡ 排氣扇 EXHAUST FAN
- ⚡ 煤氣錶 GAS METER
- ⚡ 藏地燈 CONCEALED UPLIGHT
- ⚡ 出水口 WATER OUTLET

# 裝置、裝修物料及設備 FITTINGS, FINISHES AND APPLIANCES

## 機電裝置圖 Mechanical & Electrical Provisions Plans

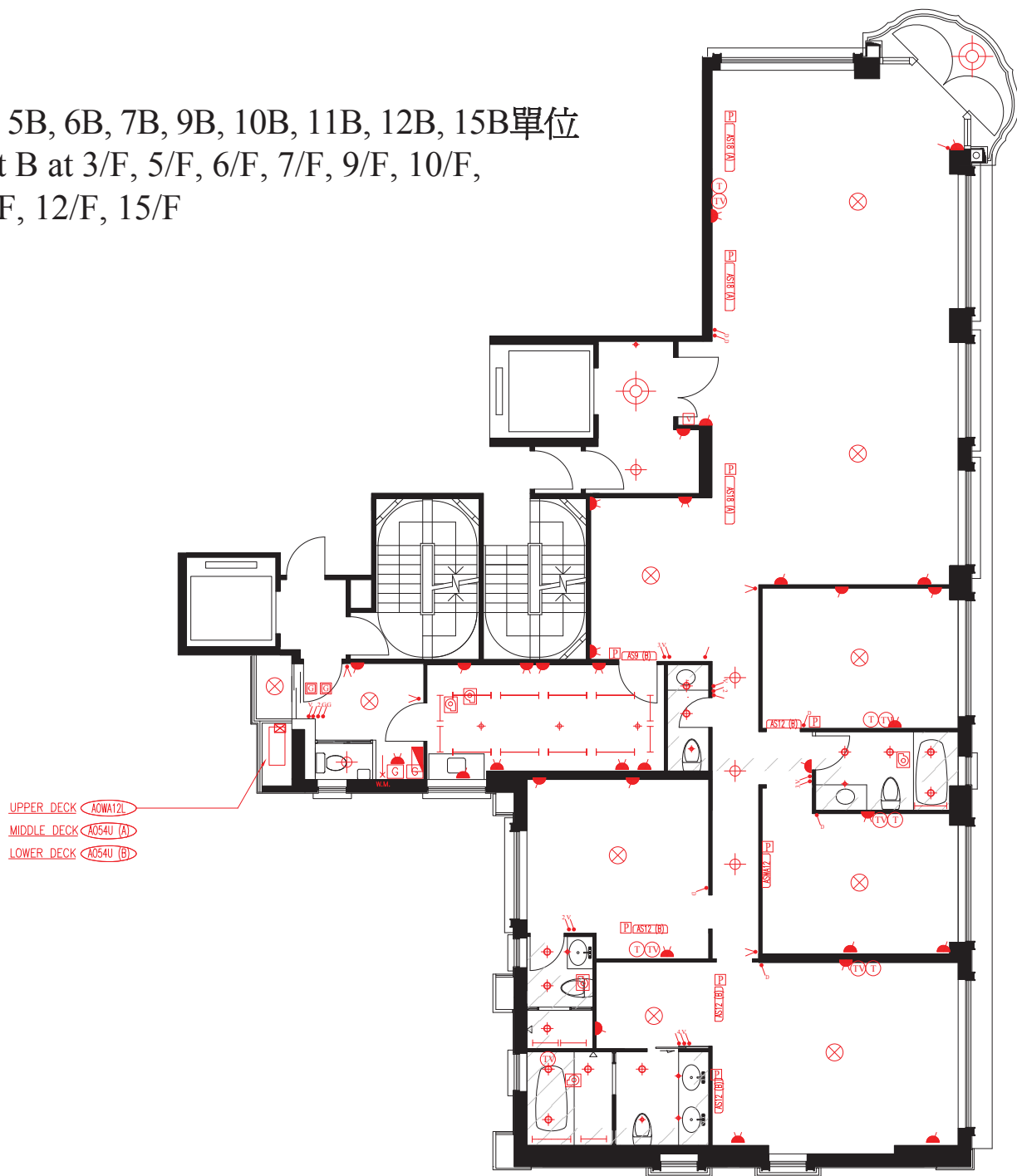
3A, 5A, 7A, 8A, 10A單位  
Flat A at 3/F, 5/F, 7/F, 8/F, 10/F



- ⊗ 天花燈位 LAMP HOLDER C/W INCANDESCENT LAMP
- ⚡/⚡/⚡ 天花筒燈 CEILING DOWNLIGHT
- ⊙ 天花吊燈 PENDANT LIGHT
- 光管 T5 FLUORESCENT TUBE
- ⚡ 光暗開關 DIMMER SWITCH
- ⚡/⚡/⚡ 10A開關 10A SWITCH
- ⚡ 13A單位插座 13A 3-PIN SHUTTERED SWITCHED SOCKET OUTLET
- ↕ 二路照明開關 10A TWO WAY LIGHTING SWITCH

- ⚡ 13A雙位插座 13A 3-PIN SHUTTERED SWITCHED SOCKET OUTLET
- ⚡ 13A保險接線組件 13A FUSED CONNECTION UNIT
- ⚡ 防水插座 ISOLATOR C/W WEATHERPROOF ENCLOSURE
- ⚡ 配電箱 MCB BOARD
- ⚡ 15A單位插座 15A 3-PIN SHUTTERED SWITCHED SOCKET OUTLET
- ⚡/⚡ 20A冷氣機開關 20A DP SWITCH C/W PILOT LIGHT
- ⚡ 煤氣熱水爐 GAS WATER HEATER
- ⚡ 30A保險接線組件 30A FUSED CONNECTION UNIT

3B, 5B, 6B, 7B, 9B, 10B, 11B, 12B, 15B單位  
Flat B at 3/F, 5/F, 6/F, 7/F, 9/F, 10/F,  
11/F, 12/F, 15/F



- ⓞ 電話插座 TELEPHONE OUTLET
- ⓞ 電視及公共天線插座 TV&FM OUTLET
- ⓞ 門鈴 DOOR BELL PUSH BUTTON
- ⓞ 視像對講機 VIDEO DOOR PHONE UNIT
- ⓞ 分體式冷氣機室內機 A/C INDOOR UNIT
- ⓞ 分體式冷氣機室外機 A/C OUTDOOR UNIT
- ⓞ 洗衣機接駁位 CONNECTION POINT FOR WASHING MACHINE
- ⓞ LED燈帶 TAPE LIGHT

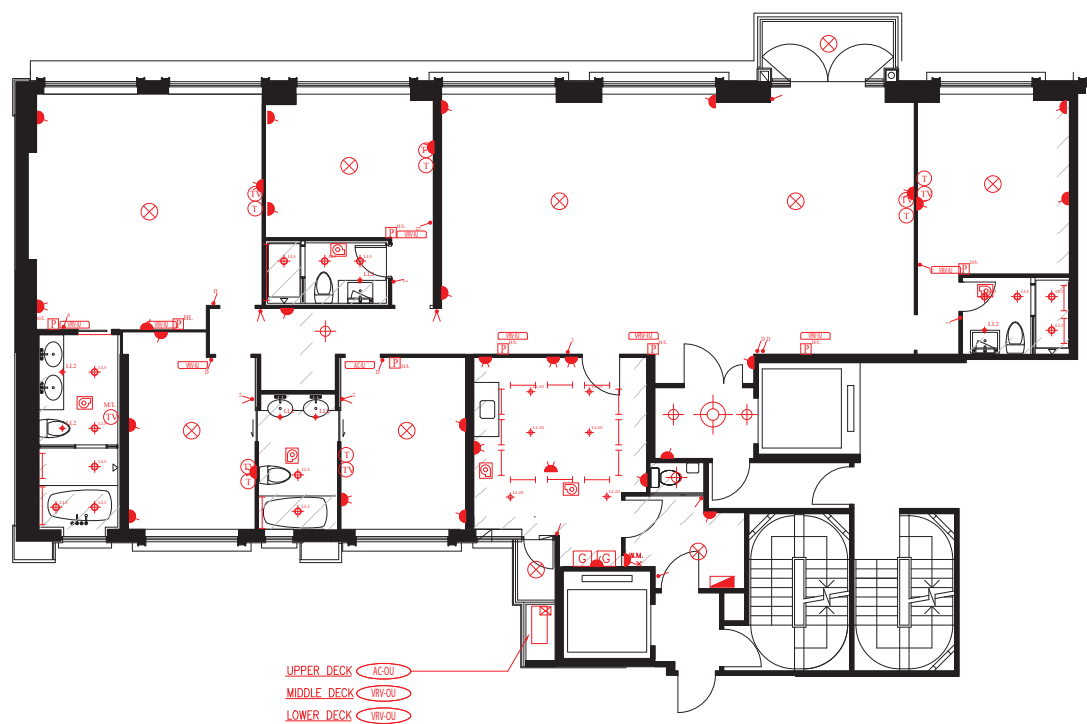
- ▷ 花槽燈 UPLIGHT
- 圓桶燈 DOWN LIGHT
- ⊠ 樓梯燈 STEP RECESSED LIGHT (100H/L)
- ⊠ 牆身壁燈 WALL MOUNT LIGHT (2500H/L)
- ⊠ 牆地角燈 WALL RECESSED LIGHT
- ⊠ 排氣扇 EXHAUST FAN
- ⊠ 煤氣錶 GAS METER

# 裝置、裝修物料及設備

## FITTINGS, FINISHES AND APPLIANCES

### 機電裝置圖 Mechanical & Electrical Provisions Plans

6A, 15A單位  
Flat A at 6/F, 15/F



- ⊗ 天花燈位 LAMP HOLDER C/W INCANDESCENT LAMP
- ⚡/⊗ 天花筒燈 CEILING DOWNLIGHT
- ⊗ 天花吊燈 PENDANT LIGHT
- 光管 T5 FLUORESCENT TUBE
- ⚡ 光暗開關 DIMMER SWITCH
- ⚡/⚡/⚡ 10A開關 10A SWITCH
- ⚡ 13A單位插座 13A 3-PIN SHUTTERED SWITCHED SOCKET OUTLET
- ⚡ 二路照明開關 10A TWO WAY LIGHTING SWITCH

- ⚡ 13A雙位插座 13A 3-PIN SHUTTERED SWITCHED SOCKET OUTLET
- ⚡ 13A保險接線組件 13A FUSED CONNECTION UNIT
- ⚡ 防水插座 ISOLATOR C/W WEATHERPROOF ENCLOSURE
- ⚡ 配電箱 MCB BOARD
- ⚡ 15A單位插座 15A 3-PIN SHUTTERED SWITCHED SOCKET OUTLET
- ⚡/⚡ 20A冷氣機開關 20A DP SWITCH C/W PILOT LIGHT
- ⚡ 煤氣熱水爐 GAS WATER HEATER
- ⚡ 30A保險接線組件 30A FUSED CONNECTION UNIT

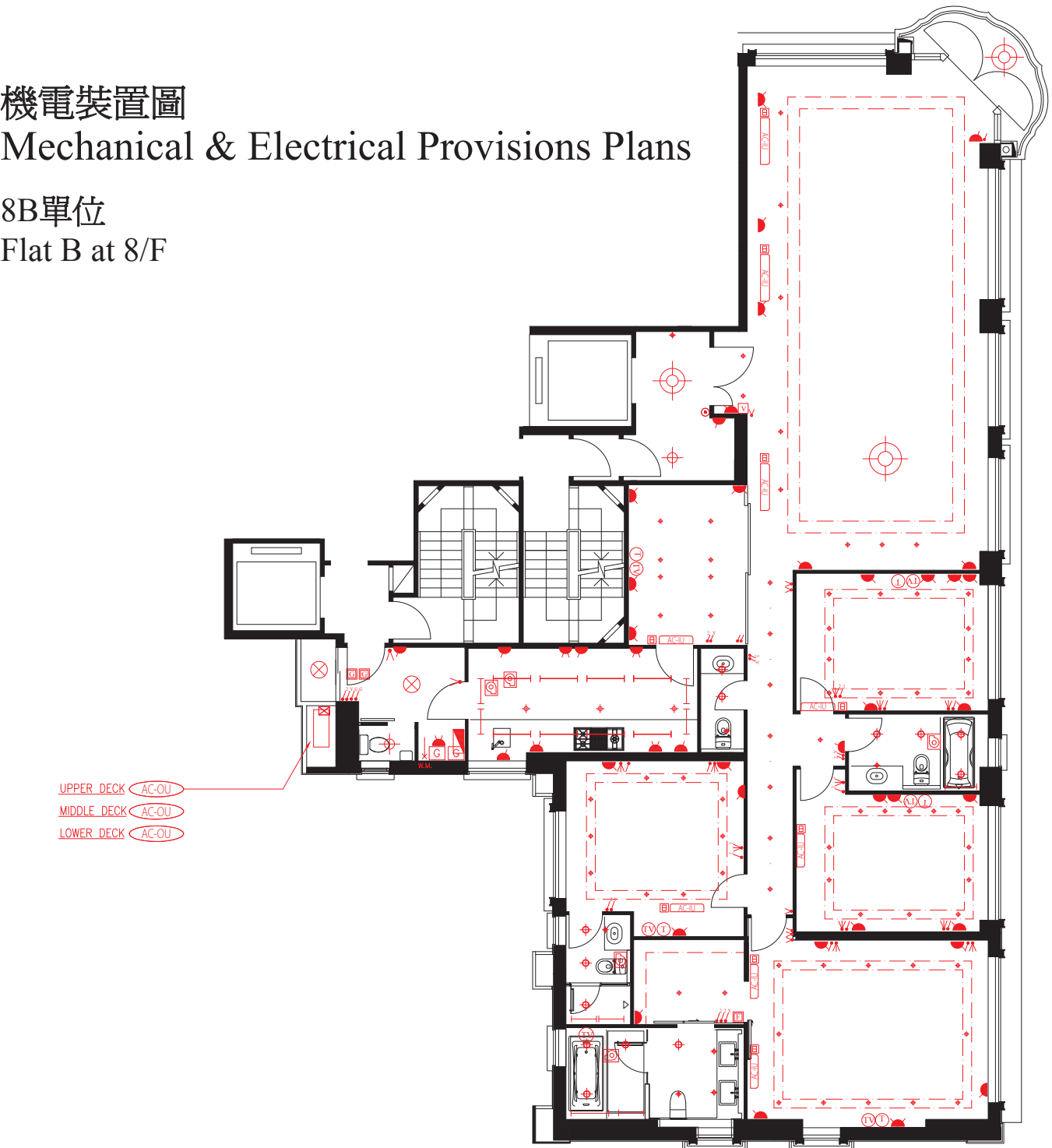
- ① 電話插座 TELEPHONE OUTLET
- ① 電視及公共天線插座 TV&FM OUTLET
- ⊗ 門鈴 DOOR BELL PUSH BUTTON
- ① 視像對講機 VIDEO DOOR PHONE UNIT
- ⚡/⚡ 分體式冷氣機室內機 A/C INDOOR UNIT
- ⚡/⚡ 分體式冷氣機室外機 A/C OUTDOOR UNIT
- ⚡/⚡ 中央冷氣系統室內機 VRF SYSTEM INDOOR UNIT
- ⚡/⚡ 中央冷氣系統室外機 VRF SYSTEM OUTDOOR UNIT

- ⚡ 洗衣機接駁位 CONNECTION POINT FOR WASHING MACHINE
- ⚡ LED燈帶 TAPE LIGHT
- ⚡ 花槽燈 UPLIGHT
- ⚡ 圓桶燈 DOWN LIGHT
- ⚡ 樓梯燈 STEP RECESSED LIGHT (100H/L)
- ⚡ 牆身壁燈 WALL MOUNT LIGHT (2500H/L)
- ⚡ 牆地角燈 WALL RECESSED LIGHT
- ⚡ 排氣扇 EXHAUST FAN
- ⚡ 煤氣錶 GAS METER

# 裝置、裝修物料及設備

## FITTINGS, FINISHES AND APPLIANCES

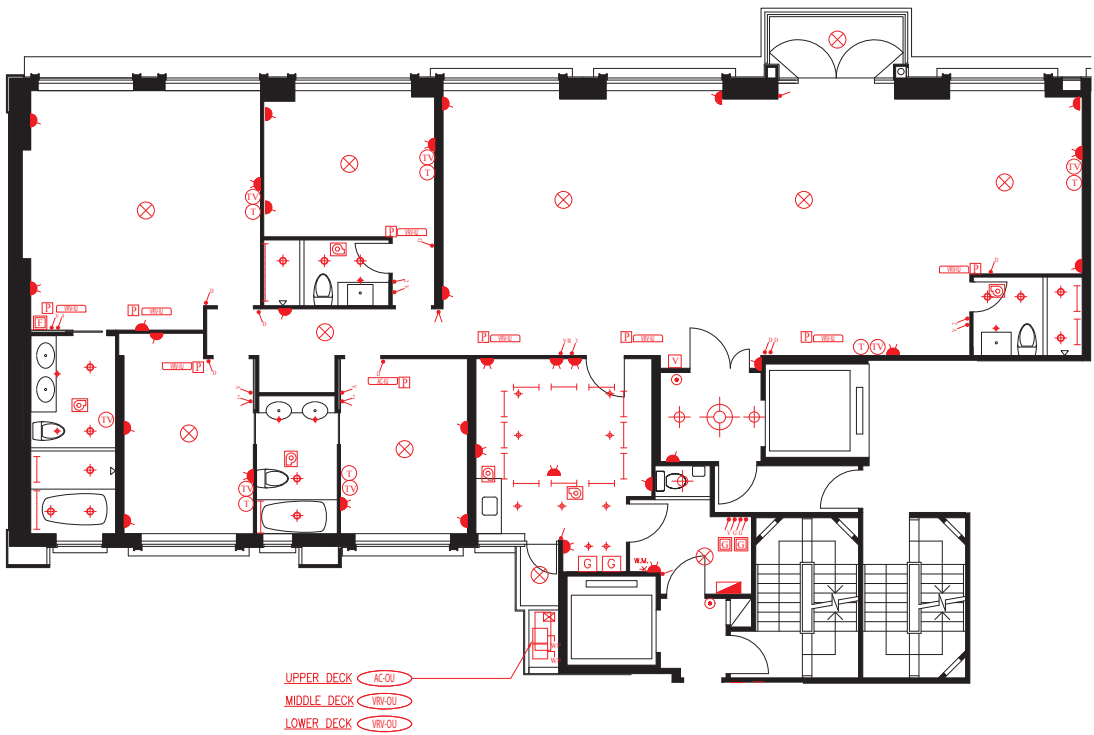
機電裝置圖  
Mechanical & Electrical Provisions Plans  
8B單位  
Flat B at 8/F



- ⊗ 天花燈位 LAMP HOLDER C/W INCANDESCENT LAMP
- ⊕/⊖/⊕ 天花筒燈 CEILING DOWNLIGHT
- ⊕ 天花吊燈 PENDANT LIGHT
- T5 光管 T5 FLUORESCENT TUBE
- ⚡ 光暗開關 DIMMER SWITCH
- ⚡ 10A開關 10A SWITCH
- ⚡ 二路照明開關 10A TWO WAY LIGHTING SWITCH
- ⚡ 三路照明開關 10A THREE WAY LIGHTING SWITCH
- ⚡ 排氣扇開關 VENTILATION FAN ON/OFF SWITCH
- ⚡ 排氣扇及抽油煙機開關 VENTILATION FAN AND EXHAUST HOOD ON/OFF SWITCH

- ⚡ 煤氣熱水爐開關 GAS WATER HEATER ON/OFF SWITCH
- ⚡ 13A單位插座 13A 3-PIN SHUTTERED SWITCHED SOCKET OUTLET (SINGLE)
- ⚡ 13A雙位插座 13A 3-PIN SHUTTERED SWITCHED SOCKET OUTLET (TWIN)
- ⚡ 13A保險接線組件 13A FUSED CONNECTION UNIT
- ⚡ 防水插座 ISOLATOR C/W WEATHERPROOF ENCLOSURE
- ⚡ 配電箱 MCB BOARD
- ⚡ 15A單位插座 15A 3-PIN SHUTTERED SWITCHED SOCKET OUTLET
- ⚡ 20A冷氣機開關 20A DP SWITCH C/W PILOT LIGHT
- ⚡ 煤氣熱水爐 GAS WATER HEATER
- ⚡ 煤氣熱水爐控制器 GAS WATER HEATER CONTROLLER

9A單位  
Flat A at 9/F



- ⚡ 電池暖控制器 ELECTRIC FLOOR HEATER CONTROLLER
- ⚡ 30A保險接線組件 30A FUSED CONNECTION UNIT
- ⚡ 電話插座 TELEPHONE OUTLET
- ⚡ 電視及公共天線插座 TV&FM OUTLET
- ⚡ 門鈴 DOOR BELL PUSH BUTTON
- ⚡ 視像對講機 VIDEO DOOR PHONE UNIT
- ⚡ 分體式冷氣機室內機 A/C INDOOR UNIT
- ⚡ 分體式冷氣機室外機 A/C OUTDOOR UNIT
- ⚡ 中央冷氣系統室內機 VRV SYSTEM INDOOR UNIT
- ⚡ 中央冷氣系統室外機 VRV SYSTEM OUTDOOR UNIT

- ⚡ 洗衣機接駁位 CONNECTON POINT FOR WASHING MACHINE
- ⚡ 花槽燈 UPLIGHT
- ⚡ 圓桶燈 DOWN LIGHT
- ⚡ 樓梯燈 STEP RECESSED LIGHT
- ⚡ 牆身壁燈 WALL MOUNT LIGHT
- ⚡ 牆地角燈 WALL RECESSED LIGHT
- ⚡ 排氣扇 EXHAUST FAN
- ⚡ 煤氣錶 GAS METER
- ⚡ LED燈帶 LED STRIP LIGHT

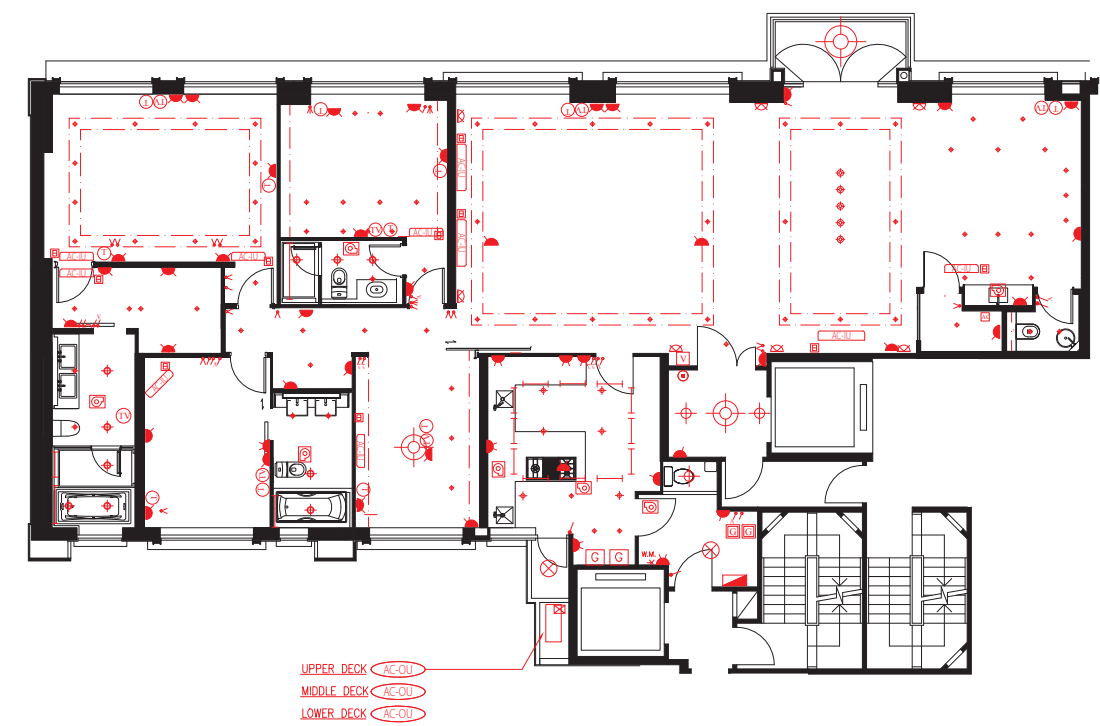


# 裝置、裝修物料及設備

## FITTINGS, FINISHES AND APPLIANCES

### 機電裝置圖 Mechanical & Electrical Provisions Plans

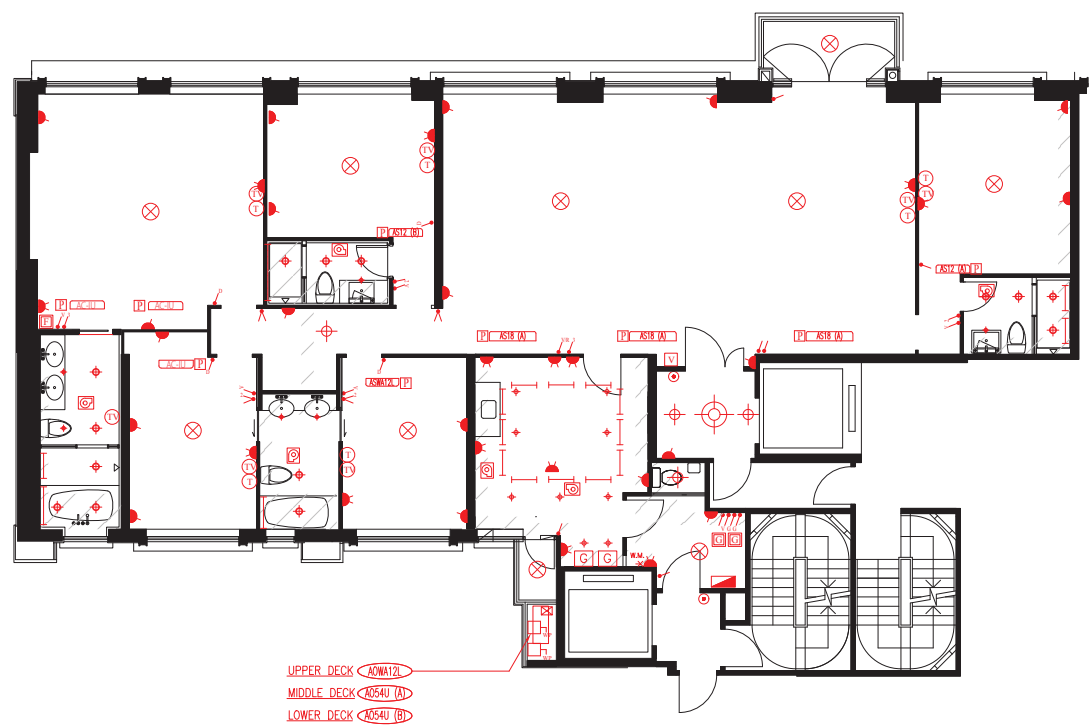
11A單位  
Flat A at 11/F



- ⊗ 天花燈位 LAMP HOLDER C/W INCANDESCENT LAMP
- ⊕/⊖/⊕ 天花筒燈 CEILING DOWNLIGHT
- ⊕ 天花吊燈 PENDANT LIGHT
- |— 光管 T5 FLUORESCENT TUBE
- ⌞ 光暗開關 DIMMER SWITCH
- ⌞/⌞/⌞ 10A開關 10A SWITCH
- ⌞/⌞ 二路照明開關 10A TWO WAY LIGHTING SWITCH
- ⌞/⌞/⌞ 三路照明開關 10A THREE WAY LIGHTING SWITCH
- ⌞ 排氣扇開關 VENTILATION FAN ON/OFF SWITCH
- ⌞ 排氣扇及抽油煙機開關 VENTILATION FAN AND EXHAUST HOOD ON/OFF SWITCH

- ⌞ 煤氣熱水爐開關 GAS WATER HEATER ON/OFF SWITCH
- ⌞ 13A單位插座 13A 3-PIN SHUTTERED SWITCHED SOCKET OUTLET (SINGLE)
- ⌞ 13A雙位插座 13A 3-PIN SHUTTERED SWITCHED SOCKET OUTLET (TWIN)
- ⌞ 13A保險接線組件 13A FUSED CONNECTION UNIT
- ⌞ 防水插座 ISOLATOR C/W WEATHERPROOF ENCLOSURE
- ⌞ 配電箱 MCB BOARD
- ⌞ 15A單位插座 15A 3-PIN SHUTTERED SWITCHED SOCKET OUTLET
- ⌞ 20A冷氣機開關 20A DP SWITCH C/W PILOT LIGHT
- ⌞ 煤氣熱水爐 GAS WATER HEATER
- ⌞ 煤氣熱水爐控制器 GAS WATER HEATER CONTROLLER

12A單位  
Flat A at 12/F



- ⌞ 電地暖控制器 ELECTRIC FLOOR HEATER CONTROLLER
- ⌞ 30A保險接線組件 30A FUSED CONNECTION UNIT
- ⌞ 電話插座 TELEPHONE OUTLET
- ⌞ 電視及公共天線插座 TV&FM OUTLET
- ⌞ 門鈴 DOOR BELL PUSH BUTTON
- ⌞ 視像對講機 VIDEO DOOR PHONE UNIT
- ⌞ 分體式冷氣機室內機 A/C INDOOR UNIT
- ⌞ 分體式冷氣機室外機 A/C OUTDOOR UNIT
- ⌞ 洗衣機接駁位 CONNECTON POINT FOR WASHING MACHINE
- ⌞ LED燈帶 TAPE LIGHT

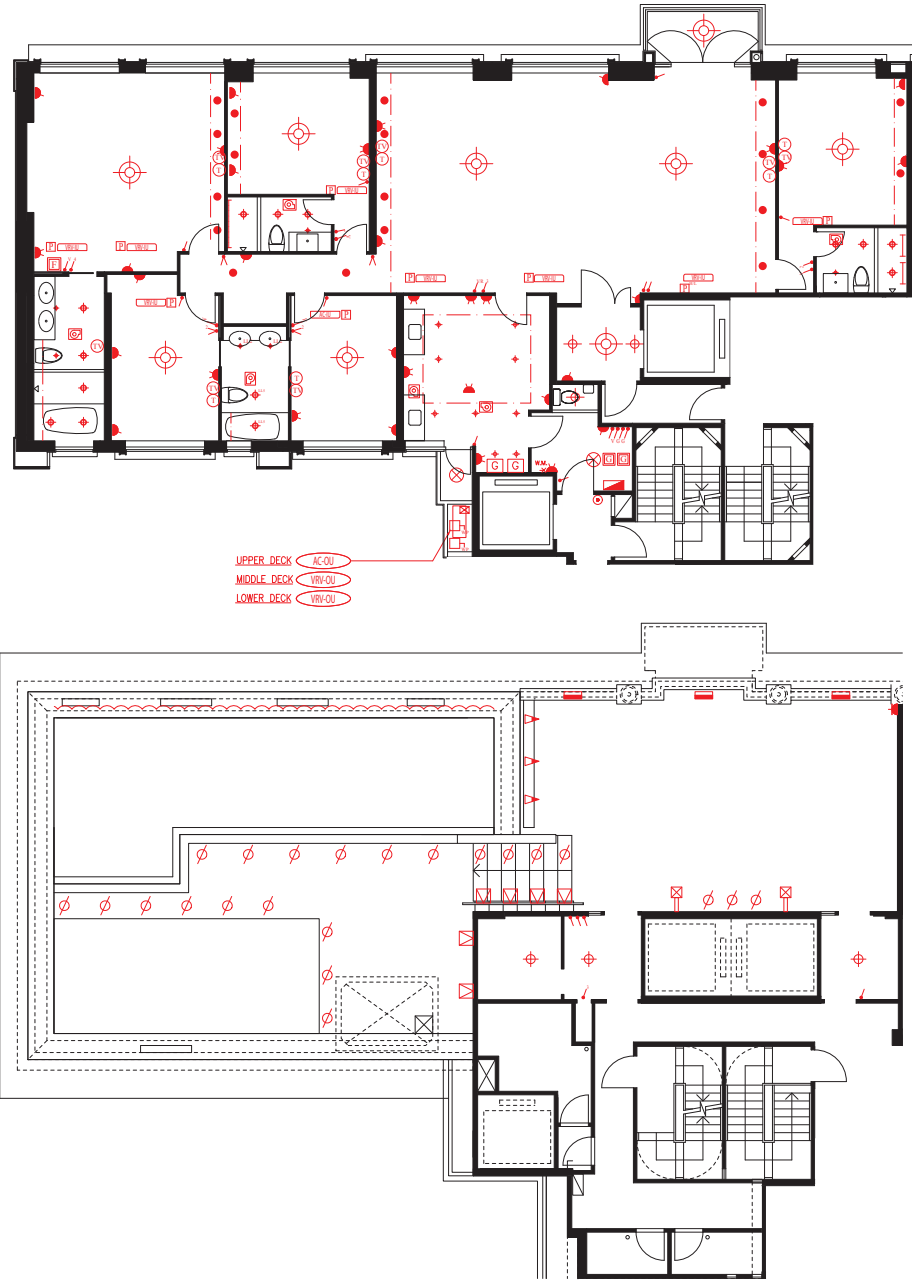
- ⌞ 花槽燈 UPLIGHT
- ⌞ 圓桶燈 DOWN LIGHT
- ⌞ 樓梯燈 STEP RECESSED LIGHT
- ⌞ 牆身壁燈 WALL MOUNT LIGHT
- ⌞ 牆地角燈 WALL RECESSED LIGHT
- ⌞ 排氣扇 EXHAUST FAN
- ⌞ 煤氣錶 GAS METER
- ⌞ 燈帶 LIGHT STRIP

# 裝置、裝修物料及設備

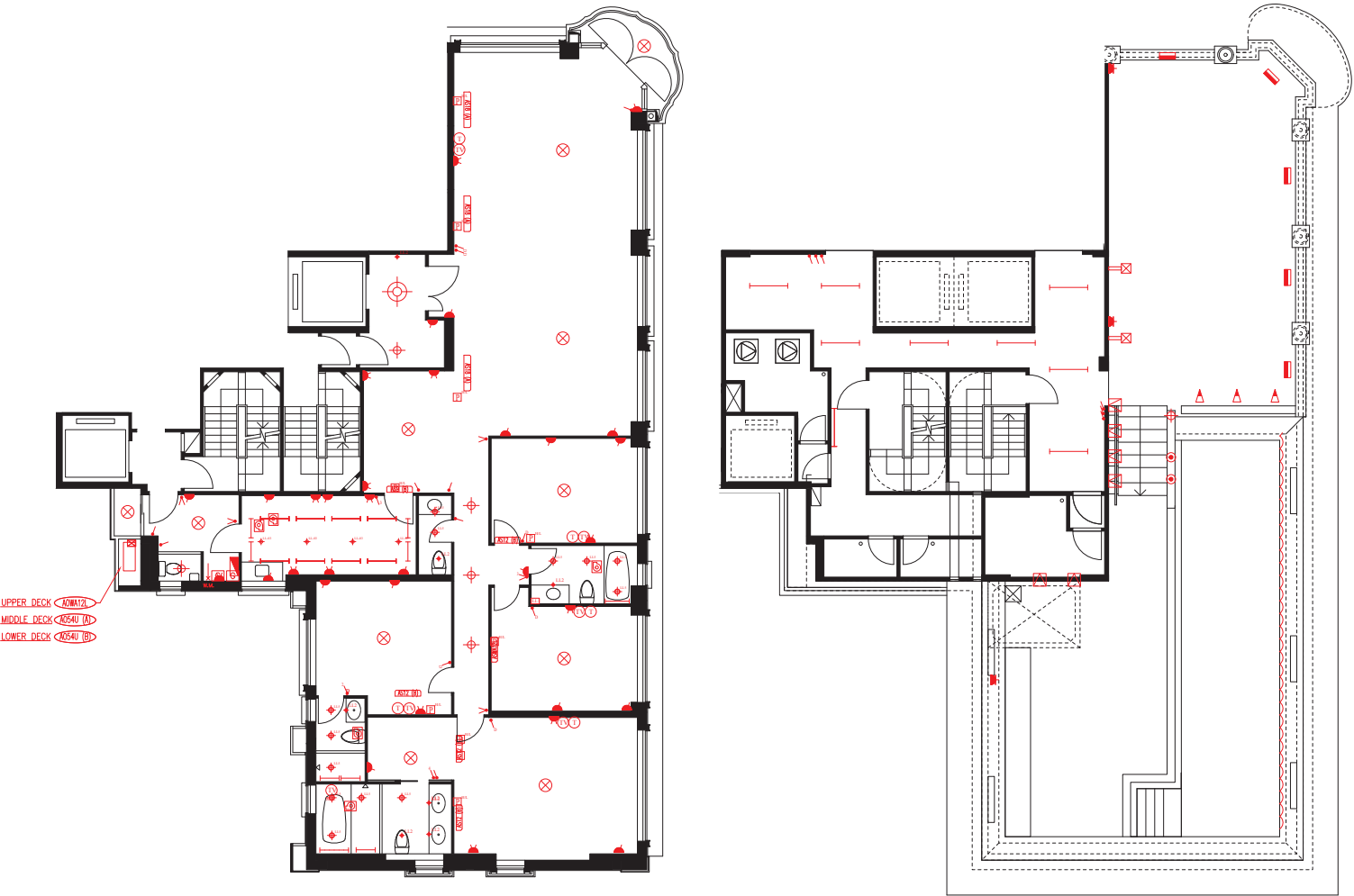
## FITTINGS, FINISHES AND APPLIANCES

### 機電裝置圖 Mechanical & Electrical Provisions Plans

16A單位  
Flat A at 16/F



16B單位  
Flat B at 16/F



- ⊗ 天花燈位 LAMP HOLDER C/W INCANDESCENT LAMP
- 50W 天花筒燈 50W 12V DOWNLIGHT
- 60W 天花筒燈 60W DOWNLIGHT
- 暗藏筒燈 RECESSED DOWNLIGHT
- ⊕ 天花筒燈 DOWNLIGHT
- ⊙ 天花吊燈 PENDANT LIGHT
- 光管 T5 FLUORESCENT TUBE
- ~ 光暗開關 DIMMER SWITCH
- 10A 開關 10A SWITCH
- 排氣扇及抽油煙機開關 VENTILATION FAN AND EXHAUST HOOD ON/OFF SWITCH
- 二路照明開關 10A TWO WAY LIGHTING SWITCH

- 13A 單位插座 13A 3-PIN SHUTTERED SWITCHED SOCKET OUTLET (SINGLE)
- 13A 雙位插座 13A 3-PIN SHUTTERED SWITCHED SOCKET OUTLET (TWIN)
- 13A 保險接線組件 13A FUSED CONNECTION UNIT
- 防水13A 單位插座 WATER PROOF 13A SWITCHED SOCKET OUTLET (SINGLE)
- 防水插座 ISOLATOR C/W WEATHERPROOF ENCLOSURE
- 配電箱 MCB BOARD
- 15A 單位插座 15A 3-PIN SHUTTERED SWITCHED SOCKET OUTLET
- 20A 接線開關 20A COOKED SWITCH
- 20A 冷氣機開關 20A DP SWITCH C/W PILOT LIGHT
- 煤氣熱水爐 GAS WATER HEATER
- 地燈 FLOOR LIGHT

- 30A 保險接線組件 30A FUSED CONNECTION UNIT
- 電話插座 TELEPHONE OUTLET
- 電視及公共天線插座 TV&FM OUTLET
- 門鈴 DOOR BELL PUSH BUTTON
- 視像對講機 VIDEO DOOR PHONE UNIT
- 地台發熱線開關 HEATER
- 分體式冷氣機室內機 A/C INDOOR UNIT
- 分體式冷氣機室外機 A/C OUTDOOR UNIT
- 中央冷氣系統室內機 VRV SYSTEM INDOOR UNIT
- 中央冷氣系統室外機 VRV SYSTEM OUTDOOR UNIT
- 燈帶 LIGHT STRIP

- 分體式冷氣機室內機 A/C INDOOR UNIT
- 分體式冷氣機室外機 A/C OUTDOOR UNIT
- 洗衣機接駁位 CONNECTION POINT FOR WASHING MACHINE
- LED 燈帶 LED STRIP LIGHT
- 花槽燈 UPLIGHT
- 圓桶燈 DOWN LIGHT
- 樓梯燈 STEP RECESSED LIGHT (100H/L)
- 牆身壁燈 WALL MOUNT LIGHT (2500H/L)
- 牆地角燈 WALL RECESSED LIGHT
- 排氣扇 EXHAUST FAN
- 煤氣錶 GAS METER

# 裝置、裝修物料及設備

## FITTINGS, FINISHES AND APPLIANCES

住宅單位機電裝置數量說明表 Schedule of Mechanical & Electrical Provisions of Residential Units

樓層 Floor	分層單位 Apartment	客廳、飯廳 Living Room, Dining Room					主人房及睡房 Master Bedroom and Bedrooms					廚房 Kitchen			主人浴室及浴室 Master Bathroom and Bathrooms		多用途房 Utility Room					平台 Flat Roof
		電視/電台 天線插座 TV/FM Outlet	電話插座 Telephone Outlet	冷氣機 接線位 Switch For A/C Unit	單位 電插座 13A Socket Outlet	雙位 電插座 13A Twin Socket Outlet	電視/電台 天線插座 TV/FM Outlet	電話插座 Telephone Outlet	冷氣機 接線位 Switch For A/C Unit	單位 電插座 13A Socket Outlet	雙位 電插座 13A Twin Socket Outlet	冷氣機 接線位 Switch For A/C Unit	單位 電插座 13A Socket Outlet	雙位 電插座 13A Twin Socket Outlet	電視/電台 天線插座 TV/FM Outlet	雙位 電插座 13A Twin Socket Outlet	電視/電台 天線插座 TV/FM Outlet	電話插座 Telephone Outlet	冷氣機 接線位 Switch For A/C Unit	單位 電插座 13A Socket Outlet	雙位 電插座 13A Twin Socket Outlet	單位 電插座 13A Socket Outlet
2	A	1	1	3	5	1	5	5	6	11	6	-	1	6	1	-	-	-	-	1	1	6
	B	1	1	3	5	5	4	4	5	8	5	-	3	4	1	-	-	-	-	1	1	-
3	A	1	1	3	5	1	5	5	6	11	6	-	2	5	1	-	-	-	-	1	1	-
	B	1	1	3	5	4	4	4	5	8	5	-	3	4	1	-	-	-	-	1	1	-
5	A	1	1	3	5	1	5	5	6	11	6	-	2	5	1	-	-	-	-	1	1	-
	B	1	1	3	5	4	4	4	5	8	5	-	3	4	1	-	-	-	-	1	1	-
6	A	1	1	3	5	1	5	5	6	11	6	-	2	5	1	-	-	-	-	1	1	-
	B	1	1	3	5	4	4	4	5	8	5	-	3	4	1	-	-	-	-	1	1	-
7	A	1	1	3	5	1	5	5	6	11	6	-	2	5	1	-	-	-	-	1	1	-
	B	1	1	3	5	4	4	4	5	8	5	-	3	4	1	-	-	-	-	1	1	-
8	A	1	1	3	5	1	5	5	6	11	6	-	2	5	1	-	-	-	-	1	1	-
	B	2	2	3	6	7	4	4	5	14	4	-	4	4	1	-	-	-	-	1	1	-
9	A	2	2	4	7	2	4	4	5	9	5	-	1	6	1	-	-	-	-	1	1	-
	B	1	1	3	5	4	4	4	5	8	5	-	3	4	1	-	-	-	-	1	1	-
10	A	1	1	3	5	1	5	5	6	11	6	-	2	5	1	-	-	-	-	1	1	-
	B	1	1	4	5	4	4	4	5	8	5	-	4	4	1	-	-	-	-	1	1	-
11	A	2	2	4	10	3	4	10	6	7	14	-	1	6	1	-	-	-	-	1	1	-
	B	1	1	4	5	4	4	4	5	8	5	-	3	4	1	-	-	-	-	1	1	-
12	A	1	1	3	5	1	5	5	6	11	6	-	1	6	1	-	-	-	-	1	1	-
	B	1	1	3	5	4	4	4	5	8	5	-	3	4	1	-	-	-	-	1	1	-
15	A	1	1	3	5	1	5	5	6	11	6	-	2	5	1	-	-	-	-	1	1	-
	B	1	1	4	5	4	4	4	5	8	5	-	4	4	1	-	-	-	-	1	1	-
16	A	2	2	3	4	2	5	5	6	11	6	-	1	6	1	-	-	-	-	1	1	1
	B	1	1	3	5	4	4	4	5	8	5	-	3	4	1	-	-	-	-	1	1	3



# 服務協議

## SERVICE AGREEMENTS

食水及沖廁水由水務署供應。  
電力由香港電燈有限公司供應。  
煤氣由香港中華煤氣有限公司供應。

Potable and flushing water is supplied by Water Supplies Department.  
Electricity is supplied by The Hongkong Electric Company Limited.  
Towngas is supplied by The Hong Kong and China Gas Company Limited.

地稅

GOVERNMENT RENT

擁有人就指明住宅物業繳付地稅的法律責任至包括買賣指明住宅物業的成交日期為止。

The owner is liable for the Government rent payable for the specified residential property up to and including the date of completion of the sale and purchase of the specified residential property.

買方的雜項付款

MISCELLANEOUS PAYMENTS BY PURCHASER

1.

在向買方交付指明住宅物業在空置情況下的管有權時，買方須負責向賣方補還水、電力及氣體的按金。
2.

在向買方交付指明住宅物業在空置情況下的管有權時，買方須向賣方支付清理廢料的費用。

1.

On the delivery of the vacant possession of the specified residential property to the purchaser, the purchaser is liable to reimburse the Vendor for the deposits for water, electricity and gas.
2.

On the delivery of the vacant possession of the specified residential property to the purchaser, the purchaser is also liable to pay to the Vendor a debris removal fee.



# 欠妥之外的保養責任期

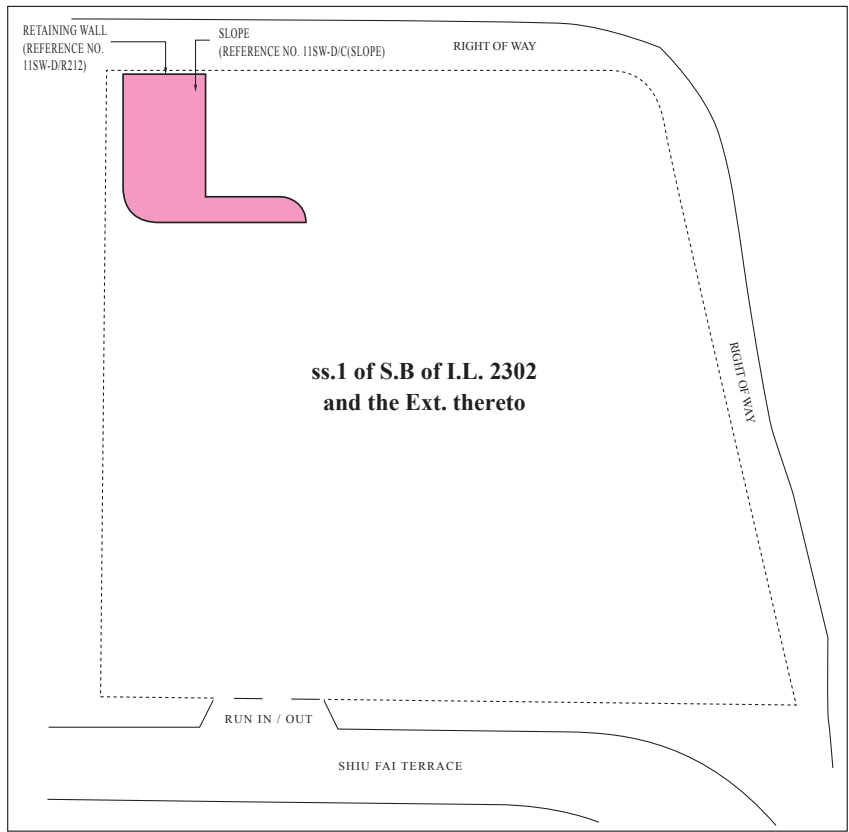
## DEFECT LIABILITY WARRANTY PERIOD

按買賣合約的規定，賣方在買賣指明住宅物業的成交日期後6個月期間內，有法律責任補救指明住宅物業的欠妥之處。

The duration of the period during which the Vendor is liable to make good any defect in the specified residential property, as provided in the agreement for sale and purchase is within 6 months after the date of completion of the sale and purchase of the specified residential property.

# 斜坡維修

## MAINTENANCE OF SLOPES



斜坡結構及護土牆  
Slope and retaining wall which form the slope structures

1. 批地文件規定，發展項目中的住宅物業的擁有人須自費維修斜坡。
2. 批地文件的特別批地條款第(37)(a)條規定：  
如在該地段或在任何政府土地上有削除、移除或移後土地的情況，或者施行任何性質的建築、填土或斜坡處理工程，不論是否已經先行得到地政總署署長的書面同意，凡是為構造、平整或發展該地段或者當中任何部分，或者是為執行承授人在批地文件條款下需要進行的其他工作所相關的，又或者為其他目的的，承授人應自行承擔費用，在該地段及其毗鄰或相連的政府或出租土地，進行及建造斜坡治理工程、擋土牆或其他支撐、保護、排水系統或輔助或其他工程，以在任何時候保護及支撐該土地，並消除及防止任何陷落、山崩或沈澱的發生。承授人應在批地文件規定的年內自行承擔費用，維持該土地、斜坡治理工程、擋土牆或其他支撐、保護、排水系統或輔助或其他工程，以致維修狀況良好，並使地政總署署長滿意。
3. 每名擁有人均須分擔維修工程的費用。
4. 根據公契，發展項目的管理人獲擁有人授權進行維修工程。
5. 公契第(38)(ss)條規定：  
經理人根據批地文件及按照斜坡維修指引及不時有適當的政府部門就斜坡維修、擋土牆及其他構築物而發出的指引，有權聘請合資格人士視察、保持、維持良好狀況及維修任何有關無論在該地段內外的斜坡、斜坡維修、擋土牆及其他構築物（如有）（只作識別用途，於本頁內的斜坡圖則以粉紅色顯示），並向業主收取因上述保養、維修及任何其他工作已經或將會合法產生的使用費。

1. The Land Grant requires the owners of the residential properties in the Development to maintain slope at their own cost.
2. Special Condition No.(37)(a) of the Land Grant stipulates that:-  
Where there is or has been any cutting away, removal or setting back of any land, or any building up or filling in or any slope treatment works of any kind whatsoever, whether with or without the prior written consent of the Director of Lands, either within the Lot or on any Government land, which is or was done for the purpose of or in connection with the formation, leveling or development of the Lot or any part thereof or any other works required to be done by the grantee under the conditions of the Land Grant, or for any other purpose, the grantee shall at his own expense carry out and construct the slope treatment works, retaining walls or other support, protection, drainage or ancillary or other works as shall or may then or at any time thereafter be necessary to protect and support such land within the Lot and also any adjacent or adjoining Government or leased land and to obviate and prevent any falling away, landslip or subsidence occurring thereafter. The grantee shall at all times during the term of the Land Grant at his own expense maintain the said land, slope treatment works, retaining walls or other support, protection, drainage or ancillary or other works in good and substantial repair and condition to the satisfaction of the Director of Lands.
3. Each of the owners is obliged to contribute towards the costs of the maintenance work.
4. Under the Deed of Mutual Covenant, the manager of the Development has the owners' authority to carry out the maintenance work.
5. Clause (38)(ss) of the Deed of Mutual Covenant stipulates that:-  
The manager shall have the authority to engage suitable qualified personnel to inspect keep and maintain in good substantial repair and condition, and carry out any necessary works in respect of all slopes, slope treatment works, retaining walls and other structures (if any) (as for identification purposes only shown coloured Pink on the Slope Plan on this page) within or outside the Lot as required by the Land Grant and in accordance with the Maintenance Manual(s) for the Slope Structures and all guidelines issued from time to time by the appropriate government department regarding the maintenance of slopes, retaining walls and related structures and to collect from the owners all costs lawfully incurred or to be incurred by the manager in carrying out such maintenance repair and any other works as aforesaid.

修訂

MODIFICATION

不適用

Not applicable.



# 申請建築物總樓面面積寬免的資料

## INFORMATION IN APPLICATION FOR CONCESSION ON GROSS FLOOR AREA OF BUILDING

### 獲寬免總樓面面積的設施分項

#### Breakdown of GFA Concessions Obtained of All Features

於印製售樓說明書前呈交予並已獲建築事務監督批准的一般建築圖則上有關總樓面面積寬免的分項的最新資料，請見下表。如印製售樓說明書時尚未呈交最終修訂圖則予建築事務監督，則有(＃)號的資料可以由認可人士提供的資料作為基礎。直至最終修訂圖則於發出佔用許可證前呈交予並獲建築事務監督批准前，以下分項資料仍可能有所修改。

Latest information on breakdown of GFA concessions as shown on the general building plans submitted to and approved by the Building Authority (BA) prior to the printing of the sales brochure is tabulated below. Information marked (＃) may be based on information provided by the authorized person if the sales brochure is printed prior to submission of the final amendment plans to the BA. The breakdown of GFA concessions may be subject to further changes until final amendment plans are submitted to and approved by the BA prior to the issuance of the occupation permit for the development.

		面積(平方米) Area (m <sup>2</sup> )
根據《建築物(規劃)條例》第23(3)(b)條不計算的總樓面面積 Disregarded GFA under Building (Planning) Regulations 23(3)(b)		
1. (＃)	停車場及上落客貨地方（公共交通總站除外） Carpark and loading/unloading area excluding public transport terminus	1,969.455
2.	<b>機房及相類設施</b> <b>Plant rooms and similar services</b>	
2.1	所佔面積受相關《認可人士、註冊結構工程師及註冊岩土工程師作業備考》或規例限制的強制性設施或必要機房，例如升降機機房、電訊及廣播設備室、垃圾及物料回收房等 Mandatory feature or essential plant room, area of which is limited by respective Practice Notes for Authorized Persons, Registered Structural Engineers and Registered Geotechnical Engineers (PNAP) or regulation such as lift machine room, telecommunications and broadcasting (TBE) room, refuse storage and material recovery chamber, etc.	87.124
2.2 (＃)	所佔面積不受任何《認可人士、註冊結構工程師及註冊岩土工程師作業備考》或規例限制的強制性設施或必要機房，例如僅供消防裝置及設備佔用的房間、電錶房、電力變壓房、食水及鹹水缸等 Mandatory feature or essential plant room, area of which is NOT limited by any PNAP or regulation such as room occupied solely by fire services installations (FSI) and equipment, meter room, transformer room, potable and flushing water tank, etc.	245.091
2.3	非強制性或非必要機房，例如空調機房、風櫃房等 Non-mandatory or non-essential plant room such as air-conditioning plant room, air handling unit (AHU) room, etc.	11.946

		面積(平方米) Area (m <sup>2</sup> )
根據聯合作業備考第1號及第2號提供的環保設施 Green Features under Joint Practice Notes 1 and 2		
3.	露台 Balcony	119.940
4.	加闊的公用走廊及升降機大堂 Wider common corridor and lift lobby	-
5.	公用空中花園 Communal sky garden	-
6.	隔聲鰭 Acoustic fin	-
7.	翼牆、捕風器及風斗 Wing wall, wind catcher and funnel	-
8.	非結構預製外牆 Non-structural prefabricated external wall	350.508
9.	工作平台 Utility platform	36
10.	隔音屏障 Noise barrier	-

Note:  
1. The above table is based on the requirements as stipulated in the Practice Note for Authorized Persons, Registered Structural Engineers and Registered Geotechnical Engineers ADM-2 issued by the Buildings Department. The Buildings Department may revise such requirements from time to time as appropriate.

備註:  
1. 上述表格是根據屋宇署所發出的《認可人士、註冊結構工程師及註冊岩土工程師作業備考》ADM-2 規定的要求而制訂的。屋宇署會按實際需要不時更改有關要求。

# 申請建築物總樓面面積寬免的資料

## INFORMATION IN APPLICATION FOR CONCESSION ON GROSS FLOOR AREA OF BUILDING

		面積(平方米) Area (m <sup>2</sup> )
適意設施 Amenity Features		
11.	供保安人員和管理處員工使用的櫃枱、辦公室、儲物室、警衛室和廁所、業主立案法團辦公室 Counter, office, store, guard room and lavatory for watchman and management staff, Owners' Corporation Office	24.992
12.	住宅康樂設施，包括僅供康樂設施使用的中空、機房、游泳池的濾水器機房、有蓋人行道等 Residential Recreational facilities including void, plant room, swimming pool filtration plant room, covered walkway etc. serving solely the recreational facilities	341.962
13.	有上蓋的園景區及遊樂場 Covered landscaped and play area	-
14.	橫向屏障／有蓋人行道、花棚 Horizontal screens/covered walkways, trellis	-
15.	擴大升降機井道 Larger lift shaft	38
16.	煙囪管道 Chimney shaft	-
17.	其他非強制性或非必要機房，例如鍋爐房、衛星電視共用天線房 Other non-mandatory or non-essential plant room, such as boiler room, satellite master antenna television (SMATV) room	25.081
18. (#)	強制性設施或必要機房所需的管槽、氣槽 Pipe duct, air duct for mandatory feature or essential plant room	35.038
19.	非強制性設施或非必要機房所需的管槽、氣槽 Pipe duct, air duct for non-mandatory or non-essential plant room	4.056
20.	環保系統及設施所需的機房、管槽及氣槽 Plant room, pipe duct, air duct for environmentally friendly system and feature	-
21.	複式住宅單位及洋房的中空 Void in duplex domestic flat and house	-
22.	伸出物，如空調機箱及伸出外牆超過750 毫米的平台 Projections such as air-conditioning box and platform with a projection of more than 750 mm from the external wall	30

Note:  
1. The above table is based on the requirements as stipulated in the Practice Note for Authorized Persons, Registered Structural Engineers and Registered Geotechnical Engineers ADM-2 issued by the Buildings Department. The Buildings Department may revise such requirements from time to time as appropriate.

		面積(平方米) Area (m <sup>2</sup> )
其他項目 Other Exempted Items		
23. (#)	庇護層，包括庇護層兼空中花園 Refuge floor including refuge floor cum sky garden	-
24. (#)	其他伸出物 Other projections	542.404
25.	公共交通總站 Public transport terminus	-
26. (#)	共用構築物及樓梯 Party structure and common staircase	-
27. (#)	僅供獲接納不計入總樓面面積的樓層使用的樓梯、升降機槽及垂直管道的水平面積 Horizontal area of staircase, lift shaft and vertical duct solely serving floor accepted as not being accountable for GFA	147.479
28. (#)	公眾通道 Public passage	-
29.	因建築物後移導致的覆蓋面積 Covered set back area	-
	額外總樓面面積 Bonus GFA	
30.	額外總樓面面積 Bonus GFA	-

備註:  
1. 上述表格是根據屋宇署所發出的《認可人士、註冊結構工程師及註冊岩土工程師作業備考》ADM-2 規定的要求而制訂的。屋宇署會按實際需要不時更改有關要求。

# 申請建築物總樓面面積寬免的資料

## INFORMATION IN APPLICATION FOR CONCESSION ON GROSS FLOOR AREA OF BUILDING

### 有關建築物的環境評估及發展項目的公用部分的預計能量表現或消耗的資料

本發展項目的經批准一般建築圖則不受由建築事務監督發出的《認可人士、註冊結構工程師及註冊岩土工程師作業備考》APP-151規定規限。本發展項目的環境評估及公用部分的預計能量表現或消耗的資料無須呈交建築事務監督，以作為批予總樓面面積寬免的先決條件。

### Environment Assessment of the Building and Information on the estimated energy performance or consumption for the common parts of the Development

The approved General Building Plans of this Development are not subject to the requirements stipulated in the Practice Note for Authorized Persons, Registered Structural Engineers and Registered Geotechnical Engineers APP-151 issued by the Building Authority. Environmental assessment and information on the estimated performance or consumption for the common parts of this Development were not required to be submitted to the Building Authority as a prerequisite for the granting of gross floor area concessions.



---

發展項目及其周邊地區日後可能出現改變。

There may be future changes to the development and the surrounding area.

網址  
Website:

[www.chantilly.com.hk](http://www.chantilly.com.hk)

肇輝臺6號售樓說明書檢視紀錄

Chantilly Sales Brochure Examination Record

檢視 / 修改日期	所作修改	
	頁次	所作修改
2013年9月18日	5	修改「發展項目的資料」
	6	修改「已為發展項目的建造提供貸款或已承諾為該建造提供融資的認可機構」的資料
	10	更新及修訂「發展項目的所在位置圖」 修訂「發展項目的所在位置圖」圖例 更新測繪圖日期
	12 & 14	修改「分區計劃大綱圖」圖則名稱及憲報公佈日期
	13 & 15	修改「分區計劃大綱圖」圖則名稱
	17	修改「發展項目的住宅物業的樓面平面圖」，並修改備註
	18 - 24	修改「發展項目的住宅物業的樓面平面圖」
	25	修改「發展項目的住宅物業的樓面平面圖」，並修改備註
	26	修改備註
	47 - 48	修改外部裝修物料的描述 修改室內裝修物料的描述 修改室內裝置的描述 修改雜項的描述 修改保安設施的描述
	49	修改「視像對講機」資料

Examination / Revision Date	Revision Made	
	Page Number	Revision Made
18 September 2013	5	Revise the Information on the Development
	6	The information on the Authorized institution that has made a loan, or has undertaken to provide finance, for the construction of the Development is revised
	10	Location Plan of the Development is updated and revised  Notation for Location Plan of the Development is revised  The dates of the Survey Sheets are updated
	12 & 14	Revise titles and gazette dates of Outline Zoning Plans
	13 & 15	Revise titles of Outline Zoning Plans
	17	Floor Plans of Residential Properties in the Development are revised  Remarks are revised
	18 - 24	Floor Plans of Residential Properties in the Development are revised
	25	Floor Plans of Residential Properties in the Development are revised  Remarks are revised
	26	Remarks are revised
	47 - 48	The descriptions of exterior finishes are revised The descriptions of interior finishes are revised The descriptions of interior fittings are revised The descriptions in the miscellaneous section are revised The descriptions of security facilities are revised
	49	The information of video door unit is revised

檢視 / 修改日期	所作修改	
	頁次	所作修改
2013年12月17日	10	更新及修訂「發展項目的所在位置圖」  修訂「發展項目的所在位置圖」圖例  更新其中一張測繪圖的日期
	25	增加一項備註
	26	增加一項備註
	47 - 48	修改外部裝修物料的描述  修改室內裝修物料的描述  修改室內裝置的描述  修改雜項的描述
	50	修改設備的描述
2014年3月17日	10	更新及修訂「發展項目的所在位置圖」  更新測繪圖日期
	11	更新及修訂「發展項目的鳥瞰照片」  更新鳥瞰照片編號、編碼及日期
	47 - 48	修改窗之外部裝修物料的描述
2014年5月7日	封面	更改標志
	17 - 25	修訂「發展項目的住宅物業的樓面平面圖」
	26	更改錯別字
2014年6月17日	1 - 4	更新「一手住宅物業買家須知」
	10	更新及修訂「發展項目的所在位置圖」  更新測繪圖日期
	17 - 25	修訂「發展項目的住宅物業的樓面平面圖」

Examination / Revision Date	Revision Made	
	Page Number	Revision Made
17 December 2013	10	Location Plan of the Development is updated and revised  Notation for Location Plan of the Development is revised  The date of one of the Survey Sheets is updated
	25	One explanatory remark is added
	26	One explanatory remark is added
	47 - 48	The descriptions of exterior finishes are revised  The descriptions of interior finishes are revised  The descriptions of interior fittings are revised  The descriptions in the miscellaneous section are revised
	50	The descriptions in the appliances section are revised
17 March 2014	10	Location Plan of the Development is updated and revised  The dates of the Survey Sheets are updated
	11	Aerial Photograph of the Development is updated and revised  The photo reference number, code and date are updated
	47 - 48	The descriptions of window’s exterior finishes are revised
7 May 2014	Cover	Logo is revised
	17 - 25	Floor plans of residential properties in the development are revised
	26	Typo is revised
17 June 2014	1 - 4	Notes to Purchasers of First-hand Residential Properties are updated
	10	Location Plan of the Development is updated and revised  The dates of the Survey Sheets are updated
	17 - 25	Floor plans of residential properties in the development are revised

檢視 / 修改日期	所作修改	
	頁次	所作修改
2014年9月17日	6	修訂「已為發展項目的建造提供貸款或已承諾為該建造提供融資的認可機構」的現況
	10	更新及修訂「發展項目的所在位置圖」 更新測繪圖日期
	11	更新及修訂「發展項目的鳥瞰照片」 更新照片編號、編碼及日期
	12 & 14 & 15	修訂「分區計劃大綱圖」
	13	修訂「分區計劃大綱圖」，並更新圖則名稱及憲報公佈日期
	17 - 25	修訂「發展項目的住宅物業的樓面平面圖」
	26	修訂平台面積
2014年12月17日	6	更新「賣方」及「賣方的控權公司」的資料 增加三項備註
	7	修訂備註內容
	10	更新及修訂「發展項目的所在位置圖」 更新測繪圖日期
	11	更新及修訂「發展項目的鳥瞰照片」 更新照片編號、編碼及日期
	51	修訂「2A單位機電裝置圖」 修訂「機電裝置圖」圖例
	52 - 55	修訂「機電裝置圖」圖例
	56	修訂「住宅單位機電裝置數量說明表」

Examination / Revision Date	Revision Made	
	Page Number	Revision Made
17 September 2014	6	Status of Authorized institution that has made a loan, or has undertaken to provide finance, for the construction of the Development is revised
	10	Location Plan of the Development is updated and revised The dates of the Survey Sheets are updated
	11	Aerial Photograph of the Development is updated and revised The photo reference number, code and date are updated
	12 & 14 & 15	Outline Zoning Plans are revised
	13	Outline Zoning Plan is revised, and the title and gazette date of Outline Zoning Plan are revised.
	17 - 25	Floor Plans of Residential Properties in the Development are revised
	26	Flat roof areas are revised
17 December 2014	6	Information of vendor and holding company of vendor are updated Three explanatory remarks are added
	7	Content of explanatory remarks is revised
	10	Location Plan of the Development is updated and revised The dates of the Survey Sheet is updated
	11	Aerial Photograph of the Development is updated and revised The photo reference number, code and date are updated
	51	Mechanical & Electrical Provisions Plans of 2A unit is revised Notations for Mechanical & Electrical Provisions Plans are revised
	52 - 55	Notations for Mechanical & Electrical Provisions Plans are revised
	56	Schedule of Mechanical & Electrical Provisions of Residential Units is revised

檢視 / 修改日期	所作修改	
	頁次	所作修改
2015年3月17日	10	更新及修訂「發展項目的所在位置圖」 更新測繪圖的日期
	11 & 11a	更新、增加及修訂「發展項目的鳥瞰照片」 更新及增加照片編號及日期
	51	修訂「2A單位機電裝置圖」
	56	修訂「住宅單位機電裝置數量說明表」
2015年6月17日	10	更新及修訂「發展項目的所在位置圖」 更新測繪圖的日期
	11 & 11a	「發展項目的鳥瞰照片」更新為最近期之發展項目的鳥瞰照片 最近期照片的編號及日期已被更新
	48	更改錯別字
	53	修訂「8B及9A單位機電裝置圖」 修訂「機電裝置圖」圖例
	54	修訂「11A單位機電裝置圖」 修訂「機電裝置圖」圖例
	56	修訂「住宅單位機電裝置數量說明表」

Examination / Revision Date	Revision Made	
	Page Number	Revision Made
17 March 2015	10	Location Plan of the Development is updated and revised The dates of Survey Sheets are updated
	11 & 11a	Aerial Photographs of the Development are updated, added and revised The photo reference numbers and dates are updated and added
	51	Mechanical & Electrical Provisions Plans of 2A unit is revised
	56	Schedule of Mechanical & Electrical Provisions of Residential Units is revised
17 June 2015	10	Location Plan of the Development is updated and revised The date of Survey Sheet is updated
	11 & 11a	Aerial Photographs of the Development are replaced by updated aerial photograph The photo reference number and date of the updated aerial photograph are updated
	48	Typo is corrected
	53	Mechanical & Electrical Provisions Plans of Flats 8B and 9A are revised Legend for Mechanical & Electrical Provisions Plans is revised
	54	Mechanical & Electrical Provisions Plans of Flat 11A is revised Legend for Mechanical & Electrical Provisions Plans is revised
	56	Schedule of Mechanical & Electrical Provisions of Residential Units is revised



檢視 / 修改日期	所作修改	
	頁次	所作修改
2015年9月17日	10	更新測繪圖的日期
	11	修訂「發展項目的鳥瞰照片」
	11a	增加「發展項目的鳥瞰照片」 增加照片編號及日期
2015年12月17日	10	更新「發展項目的所在位置圖」 更新測繪圖的日期
	11a	增加附加的「發展項目的鳥瞰照片」及其詳情
	13	更新「關於發展項目的分區計劃大綱圖」及其編號及日期
	19 - 20, 22 - 24	修訂「發展項目的住宅物業的樓面平面圖」
	47 - 48	修訂室內裝置的描述
	53 - 54	修訂「住宅單位機電裝置數量說明表」
2016年3月17日	7	修訂「有參與發展項目的各方的關係」的資料
	10	更新「發展項目的所在位置圖」 更新測繪圖的日期
	11a	更新「發展項目的鳥瞰照片」及修訂「發展項目的鳥瞰照片」的次序
	47 - 48	修訂室內裝置的描述

Examination / Revision Date	Revision Made	
	Page Number	Revision Made
17 September 2015	10	The dates of Survey Sheets are updated
	11	Aerial Photograph of the Development is revised
	11a	Aerial Photograph of the Development is added The photo reference number and date are added
17 December 2015	10	Location Plan of the Development is updated The date of Survey Sheet is updated
	11a	Additional Aerial Photograph of the Development and the particulars thereof are added
	13	An Outline Zoning Plan Relating to the Development and its number and date are updated
	19 - 20, 22 - 24	Floor plans of residential properties in the Development are revised
	47 - 48	The descriptions of interior fittings are revised
	53 - 54	Schedule of Mechanical & Electrical Provisions of Residential Units is revised
17 March 2016	7	Information of the Relationship between Parties Involved in the Development is revised
	10	Location Plan of the Development is updated The dates of Survey Sheets are updated
	11a	Aerial Photograph of the Development is updated and the sequence of Aerial Photographs of the Development is revised
	47 - 48	The description of interior fittings is revised

檢視 / 修改日期	所作修改	
	頁次	所作修改
2016年6月17日	10	更新「發展項目的所在位置圖」 更新測繪圖的日期
	11	更新「發展項目的鳥瞰照片」、其編號及日期
	11a	刪除不相關的「發展項目的鳥瞰照片」
	14	更新「關乎發展項目的分區計劃大綱圖」、其編號及日期
	20 & 24	修改「發展項目的住宅物業的樓面平面圖」
	53-54	修訂8B及11A單位機電裝置圖 修訂機電裝置圖圖例
2016年9月15日	13	更新「關乎發展項目的分區計劃大綱圖」及其編號及日期
	47-48	修訂室內裝修物料及室內裝置的描述
	52-54	修訂機電裝置圖
	56	修訂住宅單位機電裝置數量說明表

Examination / Revision Date	Revision Made	
	Page Number	Revision Made
17 Jun 2016	10	“Location plan of the Development” is updated The dates of Survey Sheets are updated
	11	“Aerial photograph of the Development”, reference number and date are updated
	11a	Delete the irrelevant “Aerial photographs of the Development”
	14	“Outline zoning plan relating to the Development”, its number and date are updated
	20 & 24	“Floor plans of residential properties in the Development” are revised
	53-54	Mechanical & electrical provisions plans of Flats 8B and 11A are revised Legend for mechanical & electrical provisions plans is revised
15 Sep 2016	13	“Outline zoning plan relating to the Development”, its number and date are updated
	47-48	The descriptions of interior finishes and interior fittings are revised
	52-54	Mechanical & Electrical Provisions Plans are revised
	56	Schedule of Mechanical & Electrical Provisions of Residential Units is revised

檢視 / 修改日期	所作修改	
	頁次	所作修改
2016年12月15日	10	更新「發展項目的所在位置圖」 更新測繪圖的日期
	25	修訂「發展項目的住宅物業的樓面平面圖」
	47-48	修訂室內裝修物料及室內裝置的描述
	51-55	修訂機電裝置圖
	56	修訂住宅單位機電裝置數量說明表
2017年3月15日	10	更新「發展項目的所在位置圖」 更新測繪圖的日期
	51	修訂2A單位機電裝置圖 修訂機電裝置圖圖例

Examination / Revision Date	Revision Made	
	Page Number	Revision Made
15 Dec 2016	10	“Location plan of the Development” is updated The dates of Survey Sheets are updated
	25	“Floor plans of residential properties in the Development” is revised
	47-48	The descriptions of interior finishes and interior fittings are revised
	51-55	Mechanical & Electrical Provisions Plans are revised
	56	Schedule of Mechanical & Electrical Provisions of Residential Units is revised
15 Mar 2017	10	“Location plan of the Development” is updated The dates of Survey Sheets are updated
	51	Mechanical & Electrical Provisions Plan of Flat 2A is revised Legend for Mechanical & Electrical Provisions Plans is revised

檢視 / 修改日期	所作修改	
	頁次	所作修改
2017年6月15日	10	更新「發展項目的所在位置圖」 更新測繪圖的日期
	11	更新「發展項目的鳥瞰照片」、其編號及日期
	17	增加兩項備註
	17a-17b, 25a-25b	增加頁數以顯示樓面平面圖作出改動後的細節
	18	修訂備註的中文版本
	25	增加兩項備註 修訂「發展項目的住宅物業的樓面平面圖」
	51, 55	修訂機電裝置圖
2017年9月15日	1-4	更新「一手住宅物業買家須知」
	10	更新「發展項目的所在位置圖」 更新測繪圖的日期
	25	修訂「發展項目的住宅物業的樓面平面圖」
2017年12月15日	10	更新測繪圖的日期

Examination / Revision Date	Revision Made	
	Page Number	Revision Made
15 Jun 2017	10	“Location plan of the Development” is updated The dates of Survey Sheets are updated
	11	“Aerial Photograph of the Development”, reference number and date are updated
	17	Two explanatory remarks are added
	17a-17b, 25a-25b	Pages showing the details of the alterations of floor plan are added
	18	The explanatory remark in Chinese version is revised
	25	Two explanatory remarks are added “Floor plans of residential properties in the Development” are revised
15 Sep 2017	51, 55	Mechanical & Electrical Provisions Plans are revised
	1-4	“Notes to purchasers of first-hand residential properties” is updated
	10	“Location plan of the Development” is updated The dates of Survey Sheets are updated
15 Dec 2017	25	“Floor plans of residential properties in the Development” is revised
	10	The date of Survey Sheet is updated

檢視 / 修改日期	所作修改	
	頁次	所作修改
2018年3月15日	10	更新測繪圖的日期
	11	更新「發展項目的鳥瞰照片」、其編號及日期
2018年6月15日	10	更新「發展項目的所在位置圖」 更新測繪圖的日期
	11	更新「發展項目的鳥瞰照片」、其編號及日期
	15	更新「關乎發展項目的分區計劃大綱圖」、其編號及日期
2018年9月14日	10	更新測繪圖的日期
	14	更新「關乎發展項目的分區計劃大綱圖」、其編號及日期
	49	修訂設備
	51	修訂機電裝置圖
2018年12月14日	10	更新「發展項目的所在位置圖」 更新測繪圖的日期
	49	修訂設備詳情
	51	修訂2A單位機電裝置圖
	52	修訂機電裝置圖的詳情
	52a	增加機電裝置圖
	53, 55	修訂機電裝置圖及其圖例

Examination / Revision Date	Revision Made	
	Page Number	Revision Made
15 Mar 2018	10	The date of Survey Sheet is updated
	11	“Aerial Photograph of the Development”, reference number and date are updated
15 Jun 2018	10	“Location plan of the Development” is updated The dates of Survey Sheets are updated
	11	“Aerial Photograph of the Development”, reference number and date are updated
	15	“Outline zoning plan relating to the Development”, its number and date are updated
14 Sep 2018	10	The dates of Survey Sheets are updated
	14	“Outline zoning plan relating to the Development”, its number and date are updated
	49	Appliances are revised
	51	Mechanical & Electrical Provisions Plans are revised
14 Dec 2018	10	“Location plan of the Development” is updated The dates of Survey Sheets are updated
	49	Particulars of Appliances are revised
	51	Mechanical & Electrical Provisions Plan of Flat 2A is revised
	52	Particulars of Mechanical & Electrical Provisions Plans are revised
	52a	Mechanical & Electrical Provisions Plan is added
	53, 55	Mechanical & Electrical Provisions Plans and the Legend thereof are revised



檢視 / 修改日期	所作修改	
	頁次	所作修改
2019年3月14日	10	更新測繪圖的日期
	11	更新「發展項目的鳥瞰照片」、其編號及日期
2019年6月14日	10	更新「發展項目的所在位置圖」 更新測繪圖的日期
	13	更新「關乎發展項目的分區計劃大綱圖」、其編號及日期
2019年9月13日	10	更新「發展項目的所在位置圖」 更新測繪圖的日期
2019年12月13日	10	更新「發展項目的所在位置圖」 修訂「發展項目的所在位置圖」圖例 更新測繪圖的日期
	25a-25b	修訂「發展項目的住宅物業的樓面平面圖」
	47-48	修訂室內裝修物料的描述
	55	修訂機電裝置圖及其圖例
	56	修訂住宅單位機電裝置數量說明表
2020年3月13日	10	更新「發展項目的所在位置圖」 修訂「發展項目的所在位置圖」圖例

Examination / Revision Date	Revision Made	
	Page Number	Revision Made
14 Mar 2019	10	The date of Survey Sheet is updated
	11	“Aerial Photograph of the Development”, reference number and date are updated
14 Jun 2019	10	“Location plan of the Development” is updated The dates of Survey Sheets are updated
	13	“Outline zoning plan relating to the Development”, its number and date are updated
13 Sep 2019	10	“Location plan of the Development” is updated The dates of Survey Sheets are updated
13 Dec 2019	10	“Location plan of the Development” is updated Notations for “Location plan of the Development” are revised The dates of Survey Sheets are updated
	25a-25b	“Floor plans of residential properties in the Development” are revised
	47-48	The description of interior finishes is revised
	55	Mechanical & Electrical Provisions Plans and the Legend thereof are revised
	56	Schedule of Mechanical & Electrical Provisions of Residential Units is revised
13 Mar 2020	10	“Location plan of the Development” is updated Notation for “Location plan of the Development” is revised

檢視 / 修改日期	所作修改	
	頁次	所作修改
2020年6月12日	10	更新「發展項目的所在位置圖」 更新測繪圖的日期
	11	更新「發展項目的鳥瞰照片」、其編號及日期
	11a	增加「發展項目的鳥瞰照片」 增加照片編號及日期
	25-25b	修訂「發展項目的住宅物業的樓面平面圖」
	47-48	修訂室內裝修物料的描述
	55	修訂機電裝置圖
2020年9月11日	10	更新「發展項目的所在位置圖」 更新測繪圖的日期
2020年12月11日	10	更新「發展項目的所在位置圖」 更新測繪圖的日期 修訂「發展項目的所在位置圖」圖例
	11	更新「發展項目的鳥瞰照片」、其編號、日期及飛行高度
	11a	刪除不相關的「發展項目的鳥瞰照片」
	47-48	修改室內裝置的描述
	50	修改設備的描述

Examination / Revision Date	Revision Made	
	Page Number	Revision Made
12 Jun 2020	10	“Location Plan of the Development” is updated The dates of Survey Sheet are updated
	11	“Aerial Photograph of the Development”, reference number and date are updated
	11a	Aerial Photograph of the Development is added The photo reference number and date are added
	25-25b	“Floor Plans of Residential Properties in the Development” are revised
	47-48	The description of interior finishes is revised
	55	Mechanical & Electrical Provision Plans are revised
11 Sep 2020	10	“Location Plan of the Development” is updated The dates of Survey Sheet are updated
11 Dec 2020	10	“Location Plan of the Development” is updated. The dates of Survey Sheet are updated. Notation for “Location Plan of the Development” is revised
	11	“Aerial Photograph of the Development”, reference number, date and flying height are updated
	11a	Delete the irrelevant “Aerial Photograph of the Development”
	47-48	The descriptions of Interior fittings are revised
	50	The descriptions in the appliances section are revised

檢視 / 修改日期	所作修改	
	頁次	所作修改
2021年3月11日	10	更新「發展項目的所在位置圖」 更新測繪圖的日期 修訂「發展項目的所在位置圖」圖例 修訂「發展項目的所在位置圖」備註
	11a	增加「發展項目的鳥瞰照片」 增加照片編號及日期
	13	更新「關乎發展項目的分區計劃大綱圖」、其編號及日期 修訂「關乎發展項目的分區計劃大綱圖」圖例
	49	修訂設備
2021年6月11日	10	更新「發展項目的所在位置圖」 更新數碼地形圖日期 修訂「發展項目的所在位置圖」圖例
	11	更新「發展項目的鳥瞰照片」、其編號及日期
	11a	刪除不相關的「發展項目的鳥瞰照片」
	49	修訂設備

Examination / Revision Date	Revision Made	
	Page Number	Revision Made
11 Mar 2021	10	“Location Plan of the Development” is updated The dates of Survey Sheet are updated Notation for “Location Plan of the Development” is revised Explanatory remark for “Location Plan of the Development” is revised
	11a	Aerial Photograph of the Development is added The photo reference number and date are added
	13	“Outline zoning plan relating to the Development”, its number and date are updated Notation for “Outline zoning plan relating to the Development” is revised
	49	Appliances are revised
11 Jun 2021	10	“Location Plan of the Development” is updated The dates of the digital topographic maps are updated Notation for “Location Plan of the Development” is revised
	11	“Aerial Photograph of the Development”, reference number and date are updated
	11a	Delete the irrelevant “Aerial Photograph of the Development”
	49	Appliances are revised

